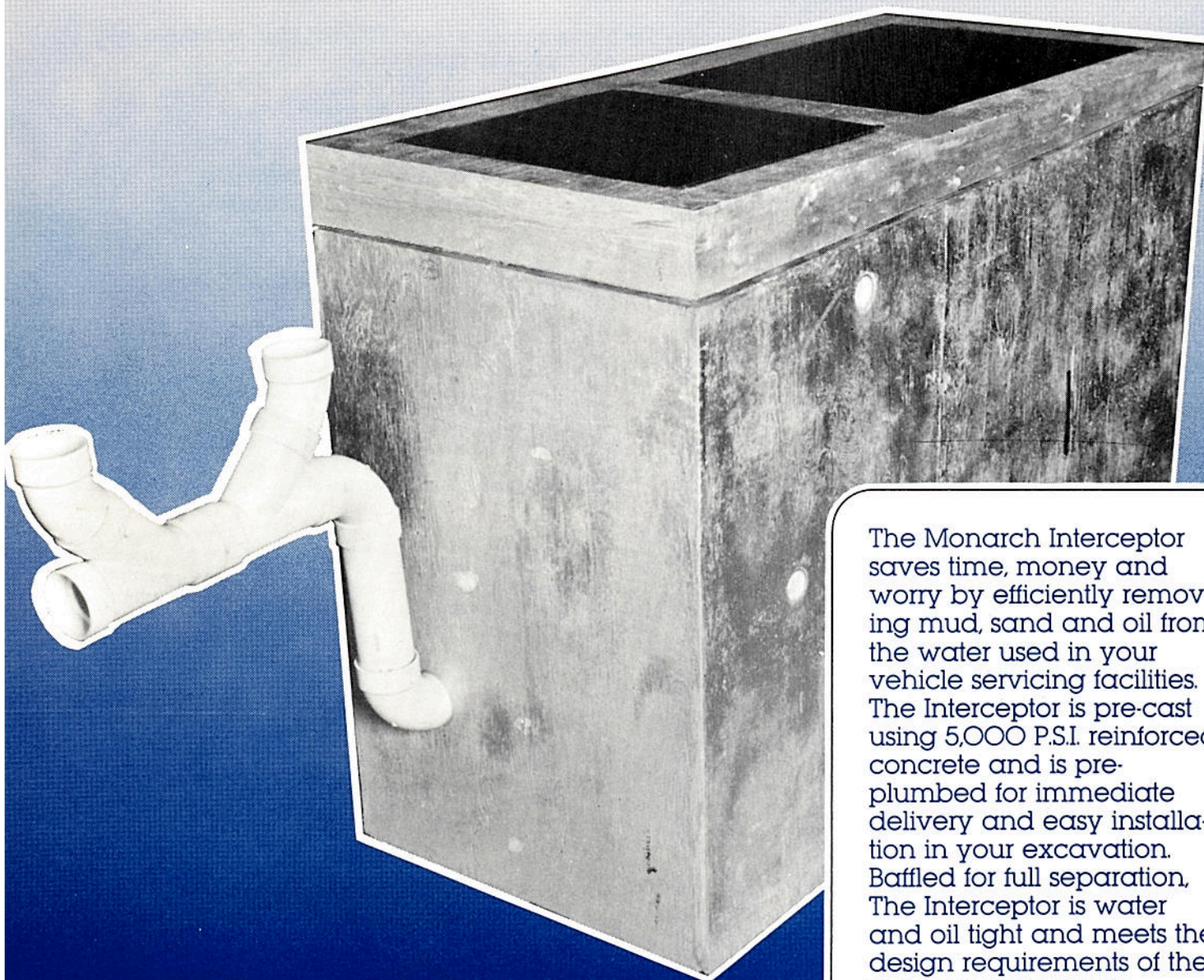




The Interceptor

From MONARCH PRODUCTS CO.



The Monarch Interceptor saves time, money and worry by efficiently removing mud, sand and oil from the water used in your vehicle servicing facilities. The Interceptor is pre-cast using 5,000 P.S.I. reinforced concrete and is pre-plumbed for immediate delivery and easy installation in your excavation. Baffled for full separation, The Interceptor is water and oil tight and meets the design requirements of the state plumbing code.

Please see reverse side



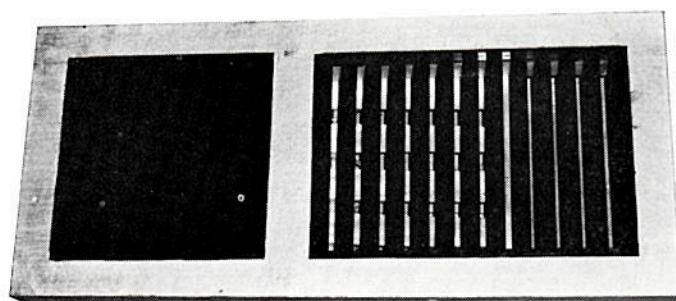
QUALITY FEATURES OF *The Interceptor*

MUD • SAND • OIL
INTERCEPTOR

- Meets design requirements of state plumbing code
- Pre-cast using 5000 P.S.I. reinforced concrete
- Factory cast on exacting form assuring correct measurements
- Piping included as shown
- Manufactured for right or left installation
- Pre-cast concrete cover available with grates in place (grates designed for up to 2 ton units)
- Heavy duty grates optional for facilities serving vehicles in excess of 2 ton
- Handling hooks provided for easy installation
- Has been factory tested
- Delivery and installation optional

- In stock
- Adjustable 2" oil drain with removable grate
- Solid, removable cover on outlet section
- Two 4" cleanout tees on outlet line
- Easy-to-remove plate and grate for servicing and maintenance
- Water and oil tight
- Baffled for full separation
- Weight: Box - 7250 lbs; Plate - 95 lbs; Cover - 780 lbs; Grate - 70 lbs.
- **Measurements – 36" x 80" - 54" high without cover, 60" high with cover**

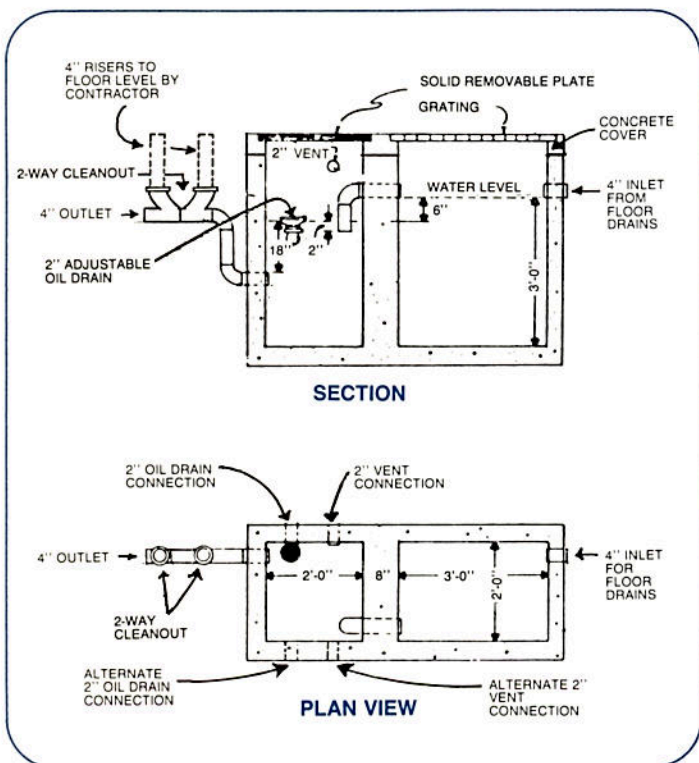
**Factory cast on
exacting form, assuring
correct measurements.**



Shown here is the top of the pre-cast concrete cover which comes with plate and grate in place.



This is a view of the interior of the oil separating tank showing the adjustable 2" oil drain with removable grate.



Manufactured to exacting
specifications by...



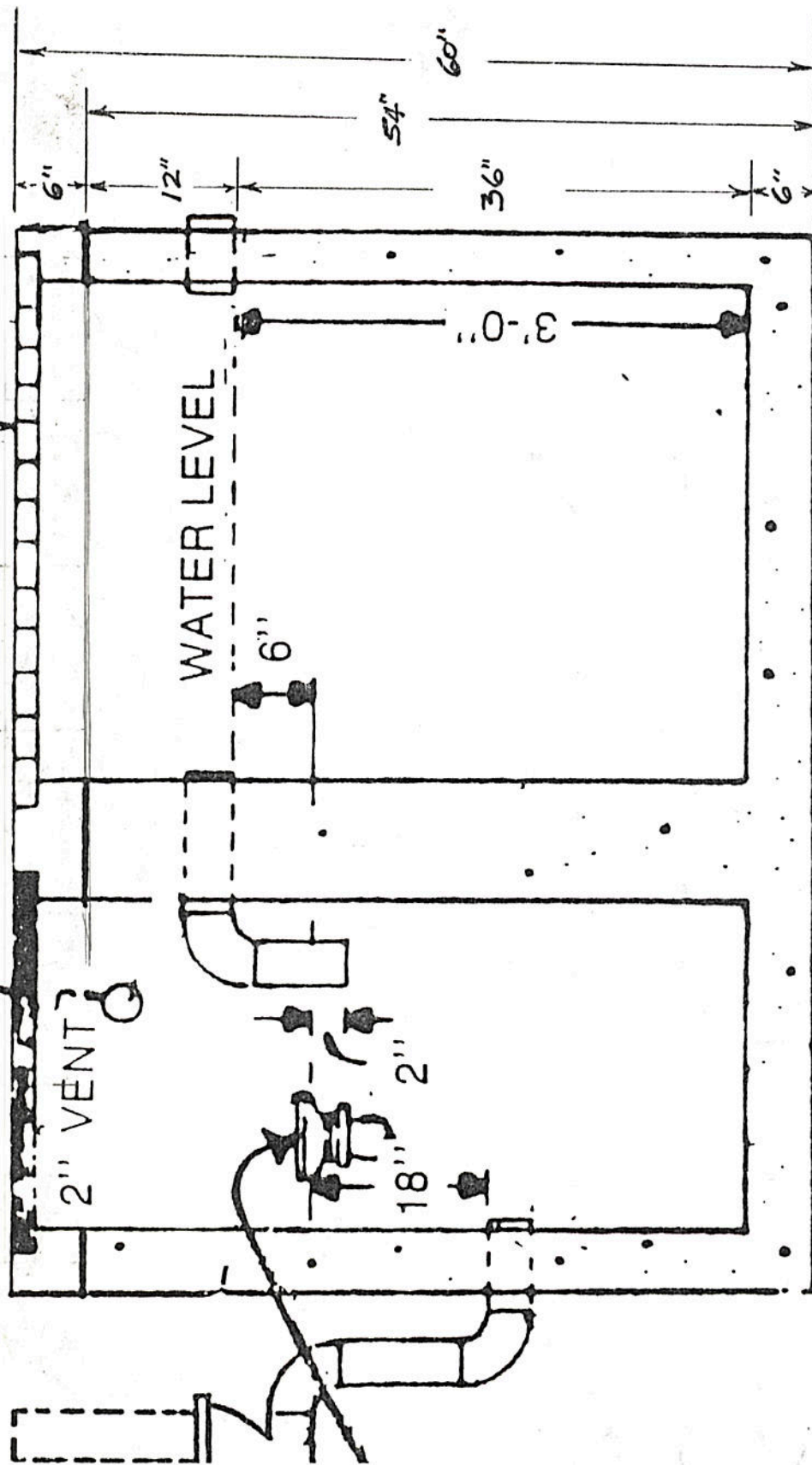
Monarch PRODUCTS CO.

MINOT • MANDAN • WILLISTON • DICKINSON
HOME OFFICE:

1300 15th St. N.W. • Minot, North Dakota 58701
Phone 701/852-0307

SOLID REMOVABLE PLATE

GRATING



CROSS SECTION OF MONARCH "INTERCEPTOR"