

AMBER COVE



We measure our success



By the size of your smile!

SKYLINE®

San Jacinto División





AMBER COVE by Skyline

Standard Features

Interior

- ▲ 8ft Sidewalls with Cathedral Ceiling
- ▲ ½" Tape & Texture Drywall Throughout
- ▲ Hand-Finished Knock-Down Ceiling
- ▲ Semi-Gloss Interior Paint
- ▲ Hardwood Shaker Style Component Cabinets with Hidden Hinges
- ▲ Wood Closet Shelving and Wood Pole
- ▲ 2-Panel By-Pass Closet Doors per Plan
- ▲ 2-Panel Interior Doors with 3-Mortised Hinges
- ▲ Single Lever Handles
- ▲ Shaw Mantra Carpet
- ▲ No-Wax Congoleum® Diamondflor Vinyl Floor Covering Kitchen and Baths
- ▲ Metal Mini Blinds
- ▲ 2-1/4" Painted Base Board Molding
- ▲ Painted Door Casing

Kitchen

- ▲ 42" Tall Hardwood Shaker Style Component Cabinets with Hidden Hinges
- ▲ White Lined Interior Cabinets with Adjustable Base and Overhead Shelves
- ▲ Whirlpool® Brand Name Appliances (Gas or Electric)
 - 18 Cu Ft Frost-Free Refrigerator
 - 30" Deluxe Gas Range with Electronic Ignition, Window, Clock & Timer
 - 30" Range Hood Vent
- ▲ Choice of Appliance Color (White or Black)
- ▲ Stainless Steel Sink
- ▲ Delta® Brand Name Single Lever Faucet with Pull-Out Sprayer
- ▲ Bank of Drawers
- ▲ Laminate Countertop with Crescent Edge
- ▲ 6" Laminate Backsplash
- ▲ Full Extension Ball-Bearing Drawer Guides

Baths

- ▲ 60" 1-Piece Fiberglass Tub/Shower with Single Lever Diverter
- ▲ China Sink with Overflow & Pop-Up Drain
- ▲ Delta® Brand-Name Dual-Control Faucets
- ▲ Vanity Strip Light
- ▲ Vanity Mirror with Beveled Edge
- ▲ Exhaust Fan with Light
- ▲ 36" High lavy

Baths Continued

- ▲ Laminate Countertop with Crescent Edge
- ▲ 6" Laminate Backsplash
- ▲ Ventilated Window per Plan
- ▲ Towel Bar & Tissue Holder
- ▲ Water Closet per Plan
- ▲ Privacy Lock

Exterior

- ▲ Upgrade R33-11-22 Insulation
- ▲ 3:12 Roof Pitch
- ▲ Dual-Glazed Vinyl Framed Low-E Windows
- ▲ Cempanel® Siding with 25-Year Limited Warranty
- ▲ Owens Corning™ Shingles with 25-Year Limited Warranty
- ▲ 2" X 6" Floor Joists 16" On Center
- ▲ 5/8" Tongue & Groove OSB Floor Decking
- ▲ 2" X 4" Exterior Sidewalls 16" On Center
- ▲ 36" X 80" 6-Panel Front Door with Deadbolt
- ▲ Choice of In-Swing Rear Door with Deadbolt
- ▲ 12" Front & Rear Overhangs
- ▲ 6" Side Eaves (28 Wide Plans)
- ▲ Semi-Gloss Exterior Paint

Utility, Safety & Energy

- ▲ 100 AMP Exterior Electrical Panel Box
- ▲ 40-Gallon Gas Water Heater
- ▲ Toe-Kick Registers in Kitchen & Baths
- ▲ Smoke Detectors with Battery Back-Up
- ▲ 56,000 BTU Gas Furnace
- ▲ Plumbed for Washer and Gas Dryer
- ▲ Recessed Dryer Vent Box
- ▲ Exterior Light at Front & Rear Doors
- ▲ Deadbolt on Front & Rear Doors
- ▲ Silent Rocker Light Switches
- ▲ G.F.I. Protected Outlets in Kitchen & Baths

Popular Options

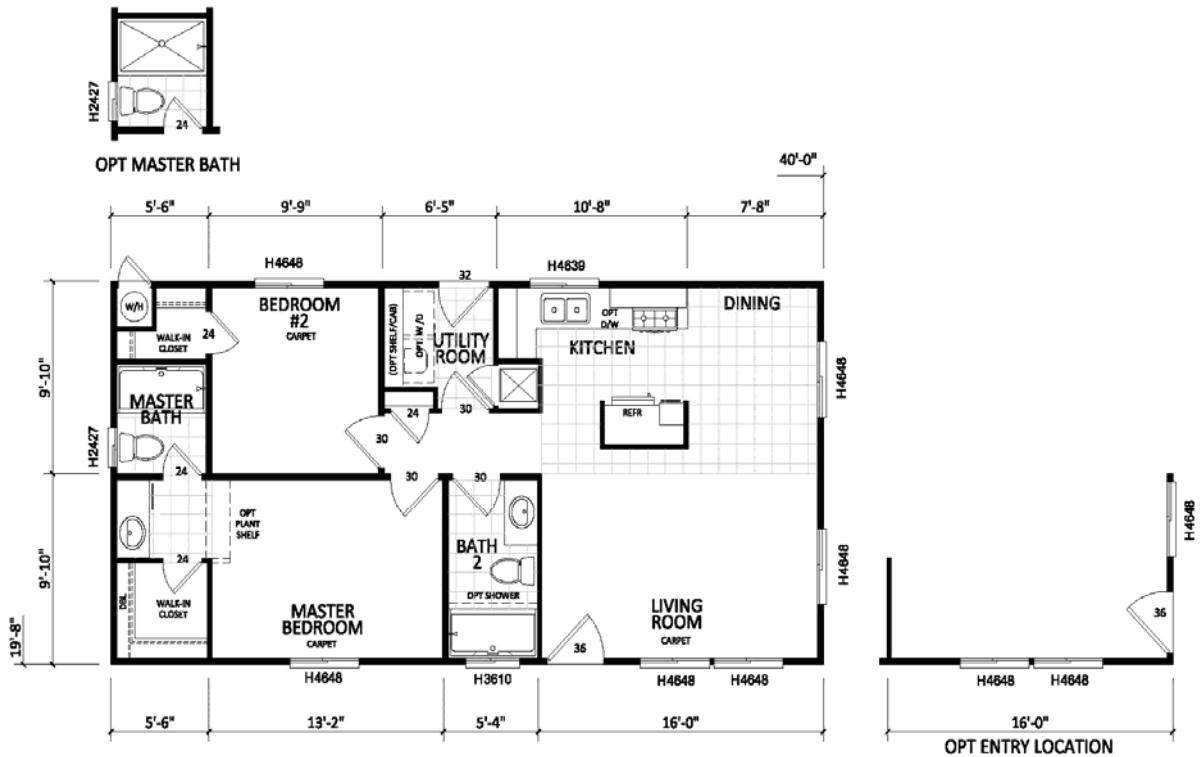
- ▲ 2x6 Exterior Walls with R-19 Insulation
- ▲ Architectural Shingles w/ Lifetime Ltd Warranty
- ▲ Upgrade FHA-Approved Carpet & Pad
- ▲ Residential Baseboard Molding
- ▲ Upgrade Kitchen Appliance Packages
- ▲ Drawer-Over-Door Kitchen Cabinets
- ▲ Wood or Gas Burning Fireplace
- ▲ Granite, Quartz or Solid Surface Countertops
- ▲ Full Height Kitchen Backsplash
- ▲ Upgrade Exterior Siding



4610-CTC

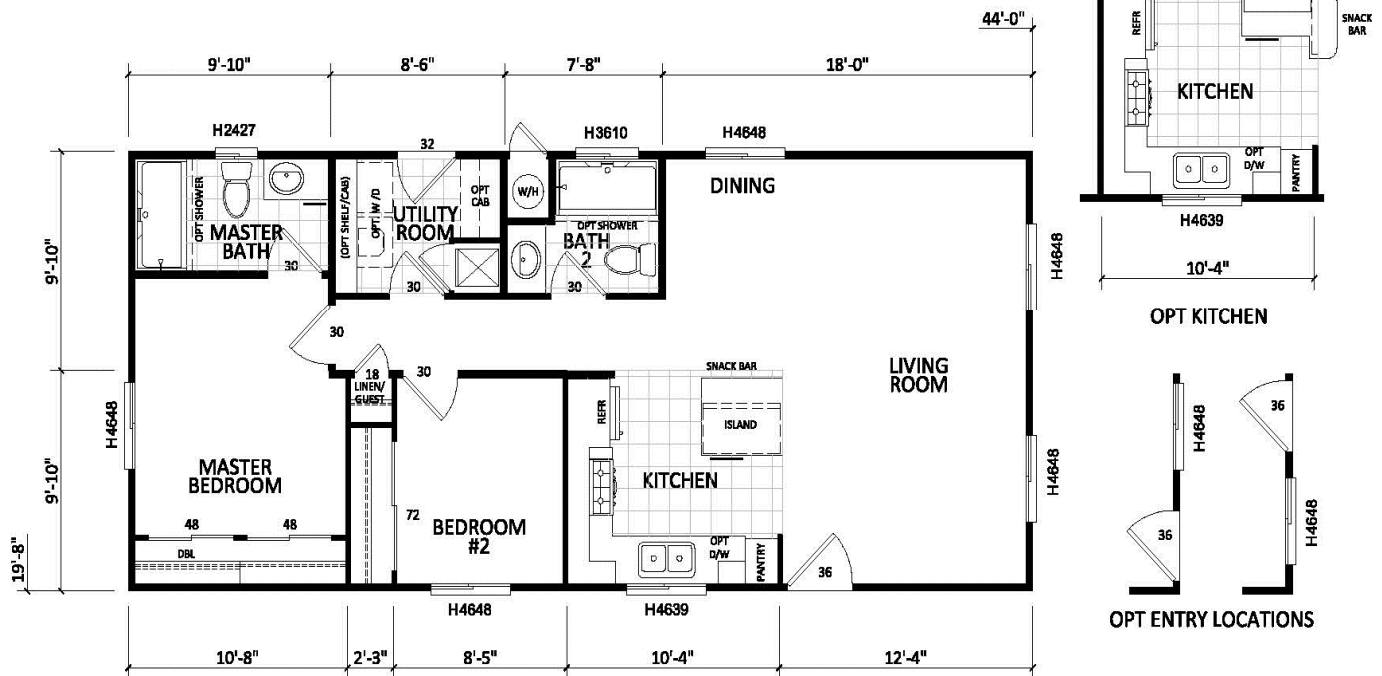
20X40 787 SQ FT 2 BEDROOMS 2 BATHS

AMBER COVE



4602-CTC

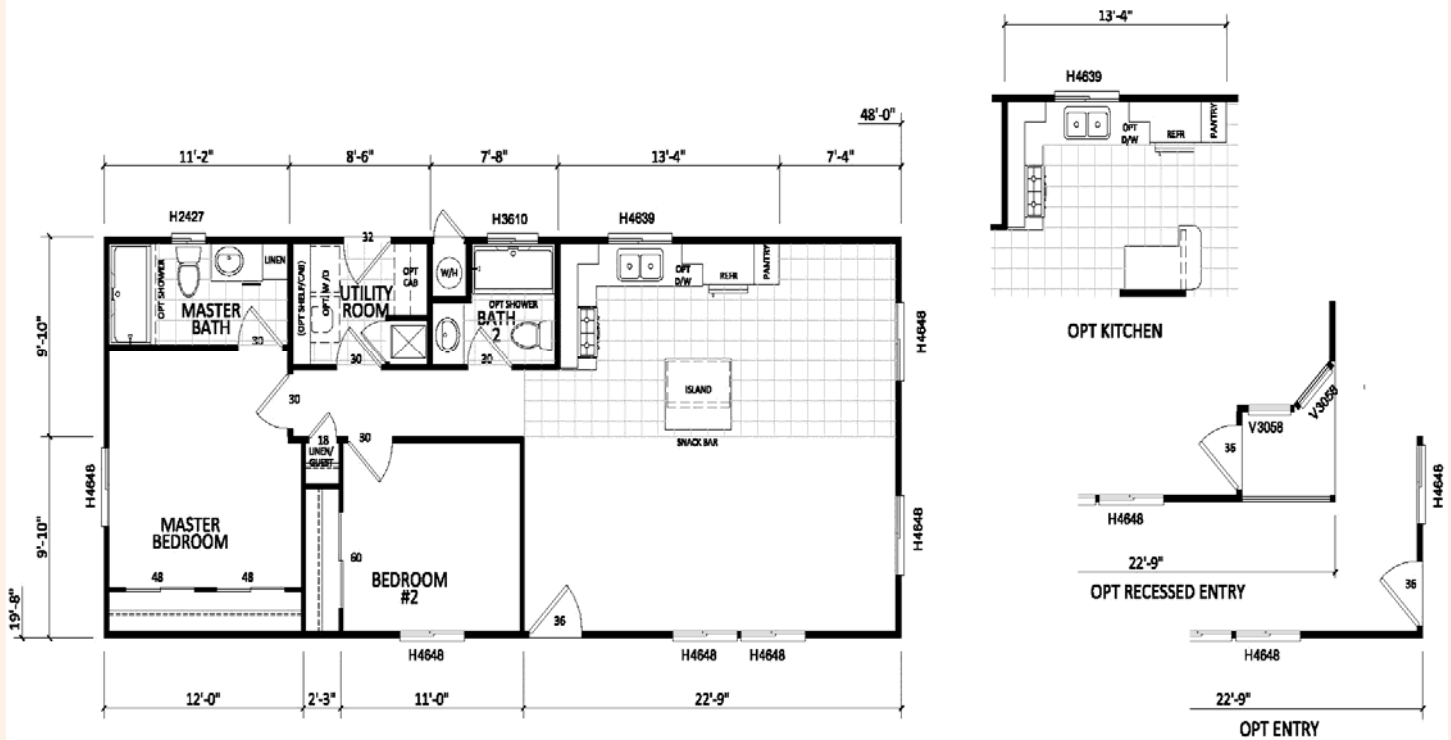
20X44 865 SQ FT 2 BEDROOMS 2 BATHS



4604-CTC

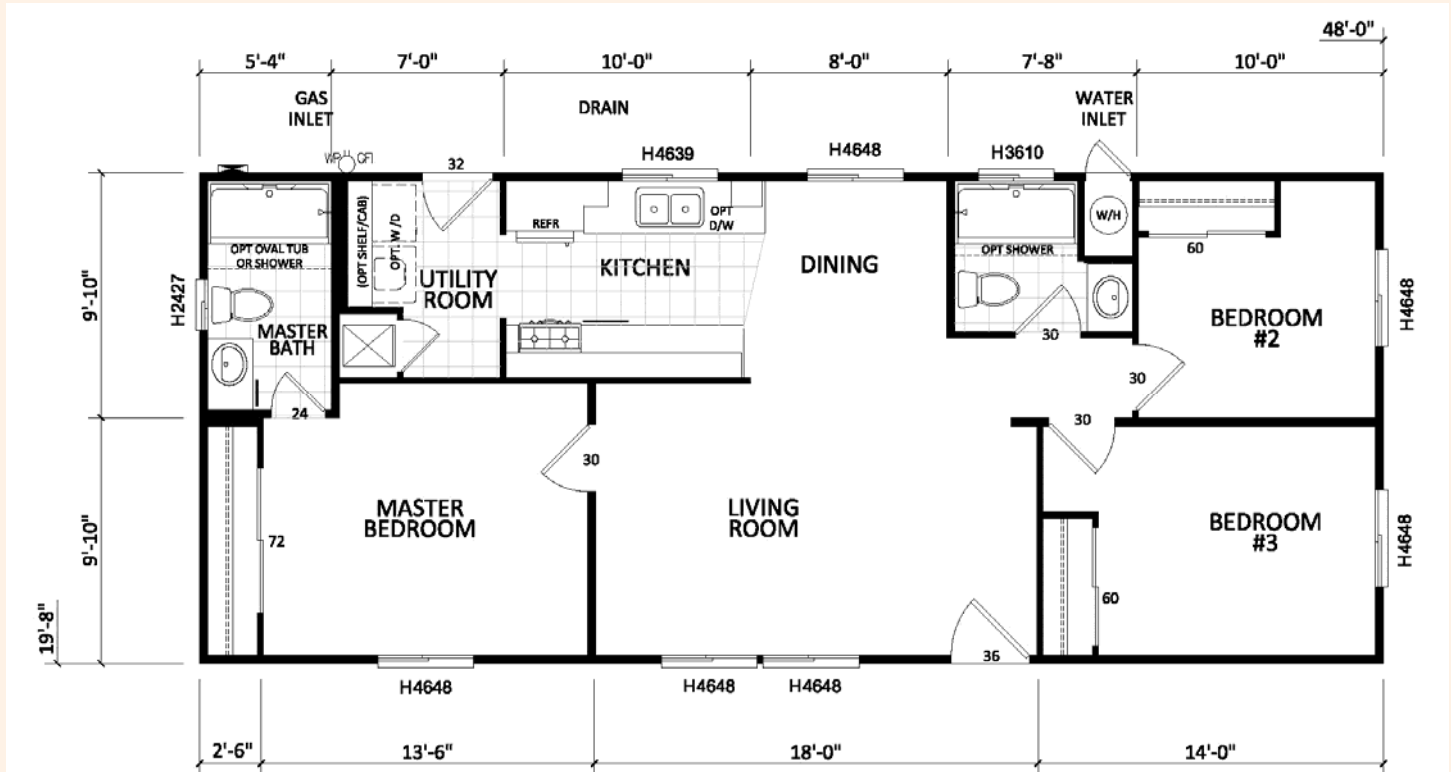
20X48 944 SQ FT 2 BEDROOMS 2 BATHS

AMBER COVE



4617-CT

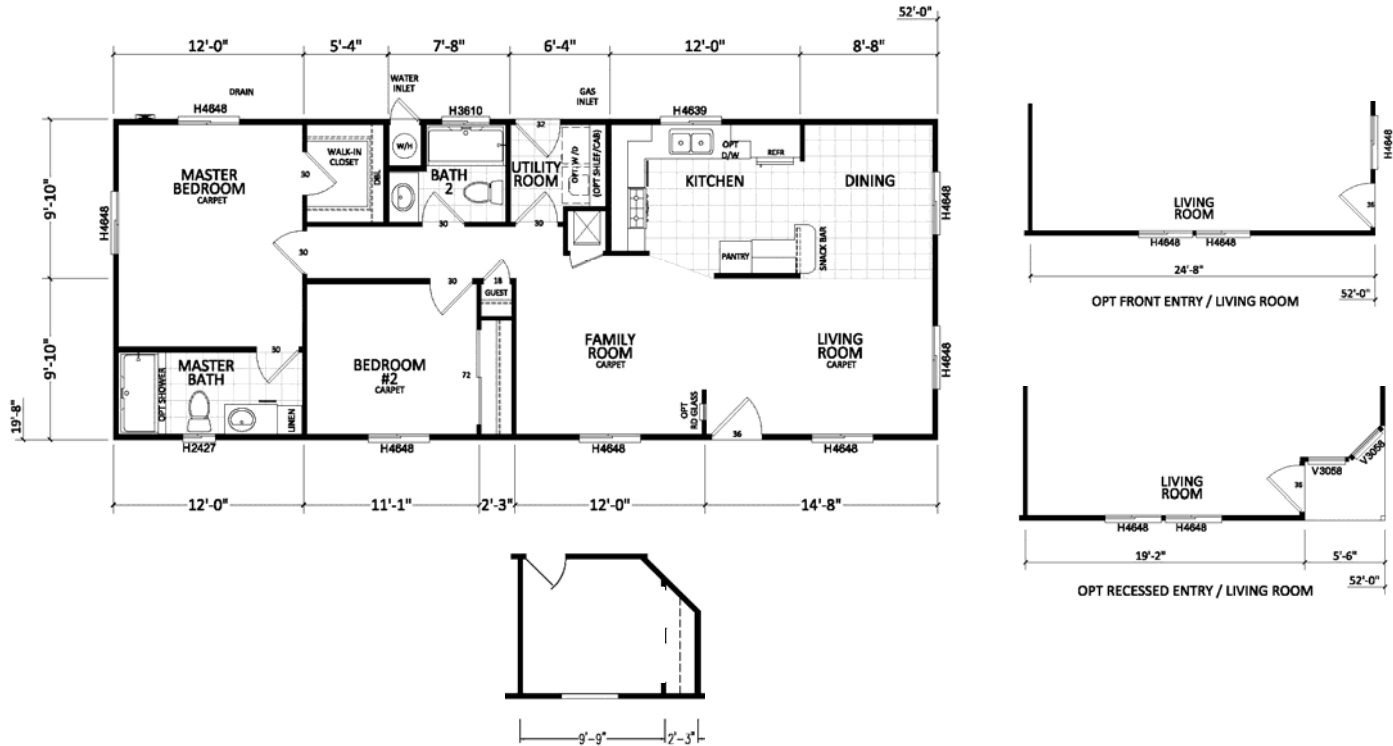
20X48 944 SQ FT 3 BEDROOMS 2 BATHS



4607-CTC

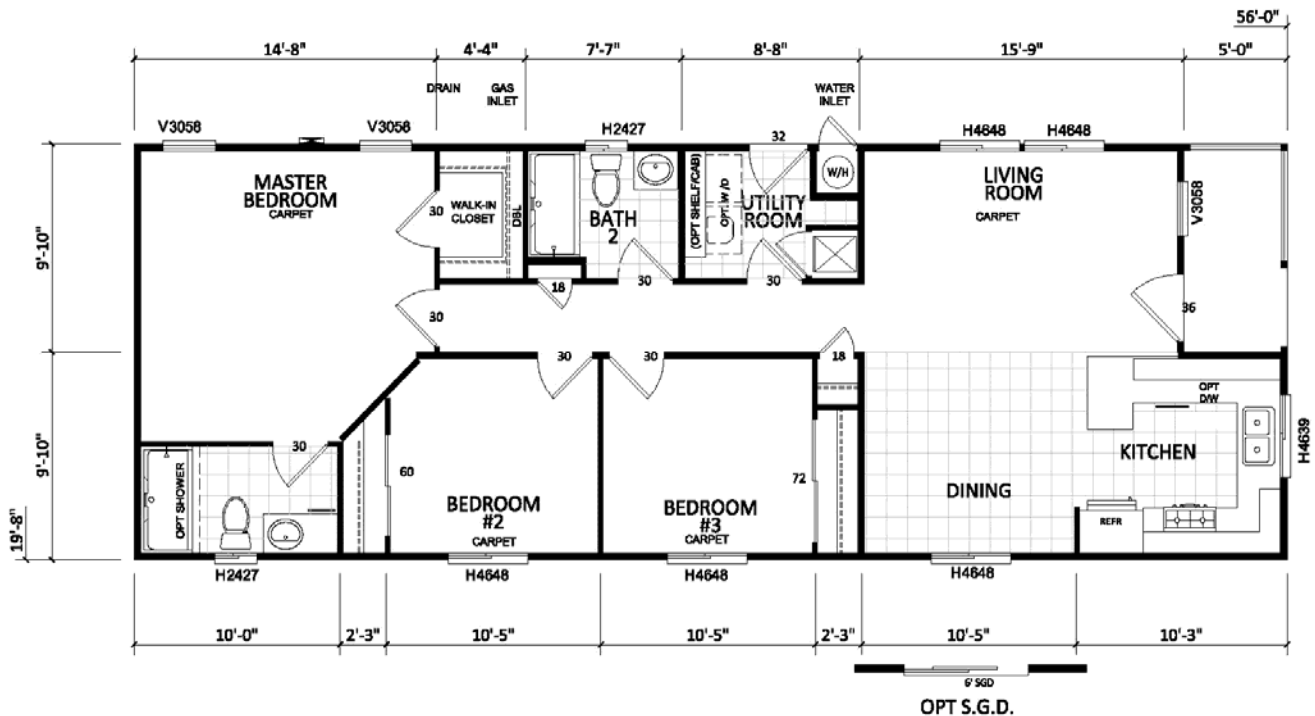
20X52 1023 SQ FT 2 BEDROOMS 2 BATHS

AMBER COVE



4608-CTC (4208-CTC)

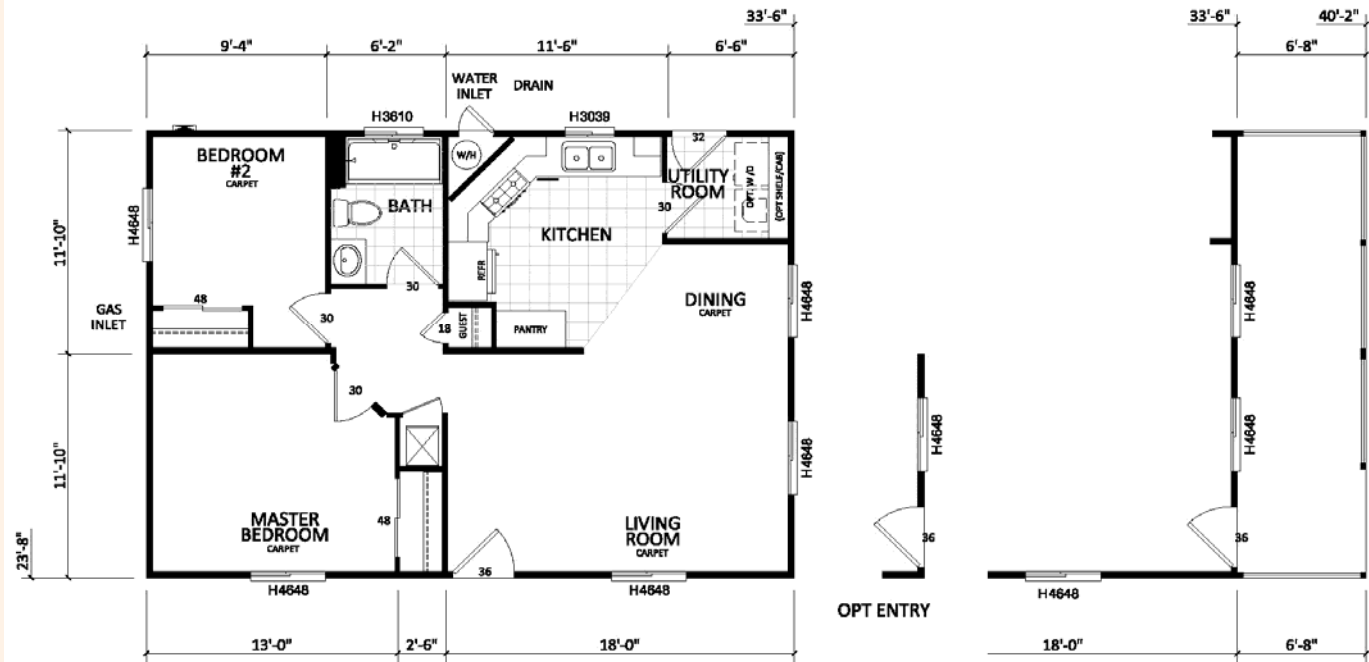
20X56 1101SQ FT 3 BEDROOMS 2 BATHS



K601-CT

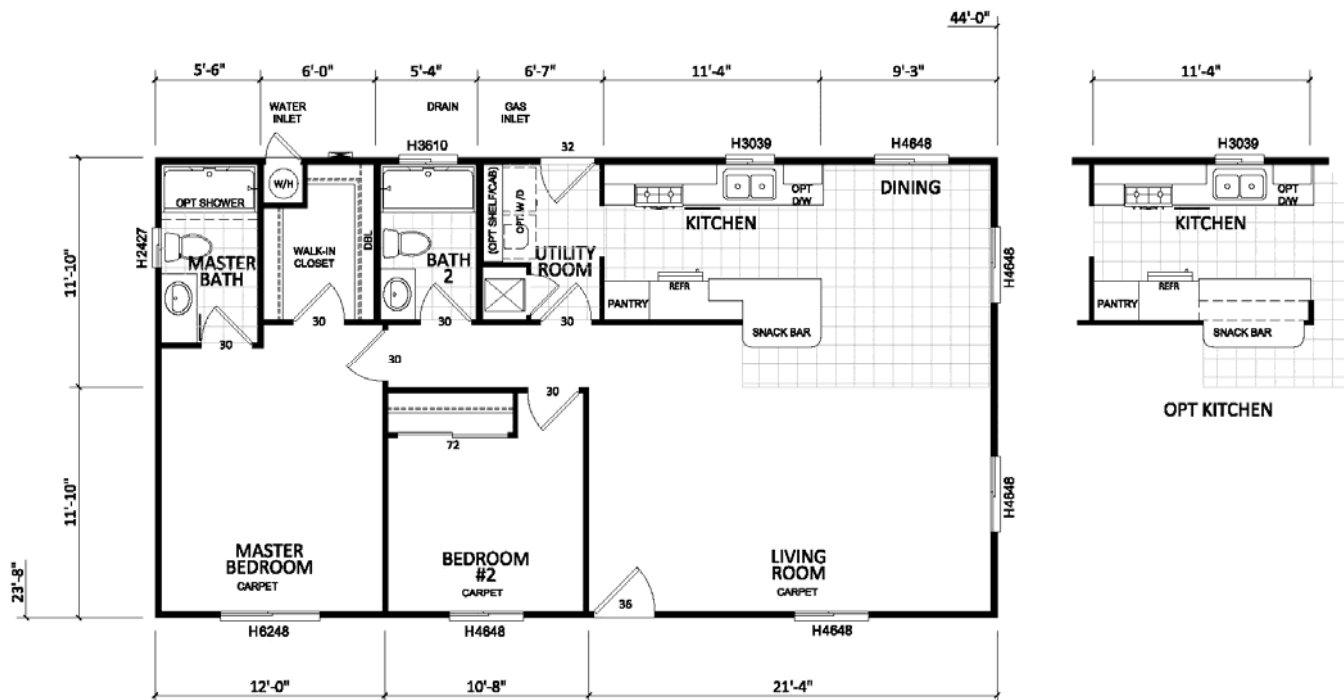
24X33-6 793 SQ FT 2 BEDROOMS 1 BATH

AMBER COVE



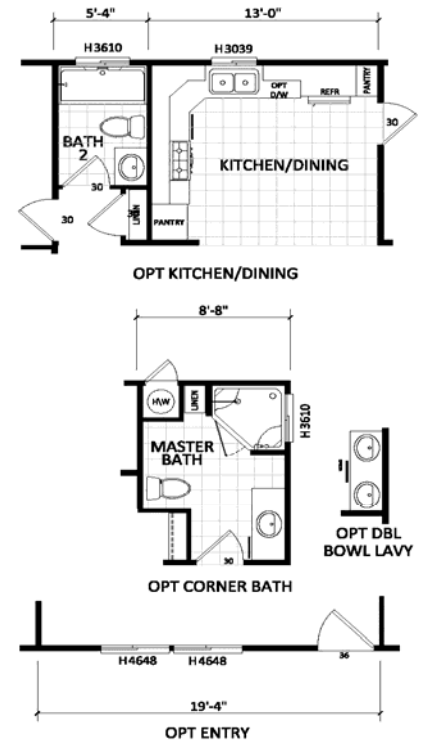
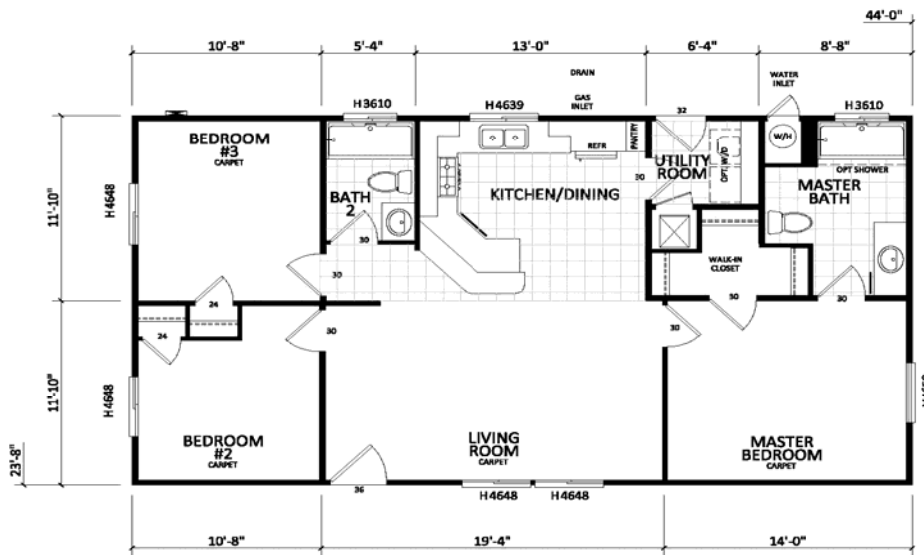
K604-CT

24X44 1041 SQ FT 2 BEDROOMS 2 BATHS



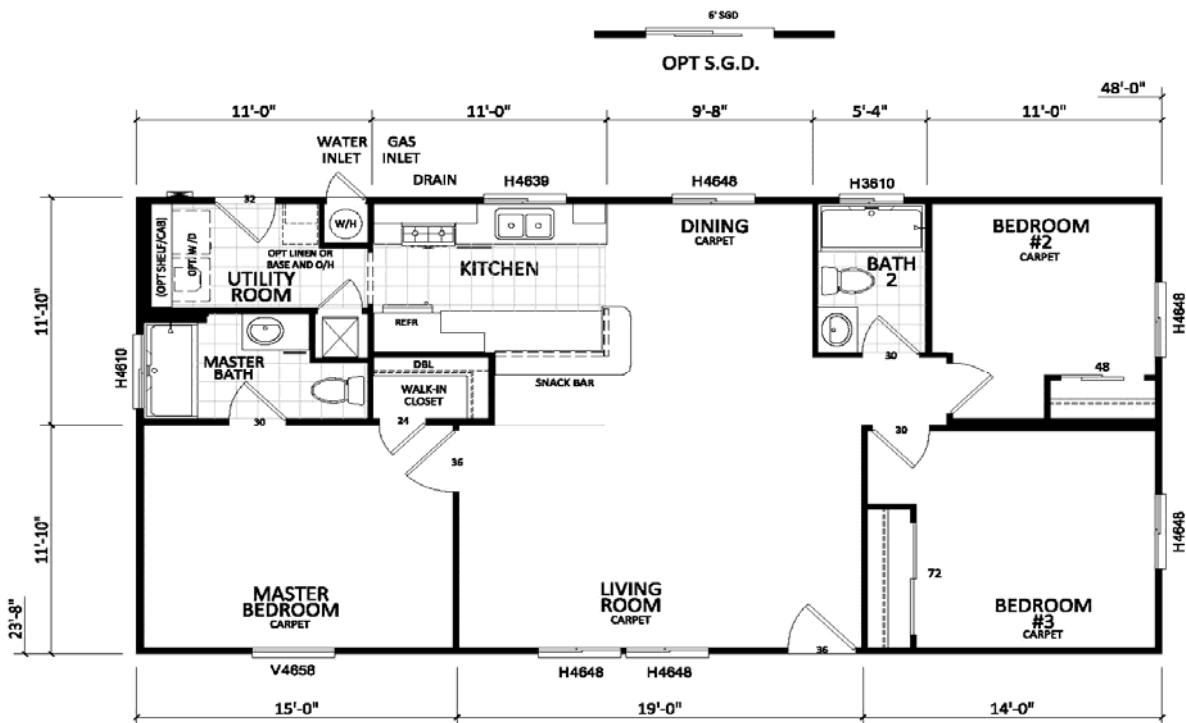
24x44 1041 SQ FT 3 BEDROOMS 2 BATHS

AMBER COVE



K600-CT

24X48 1136 SQ FT 3 BEDROOMS 2 BATHS



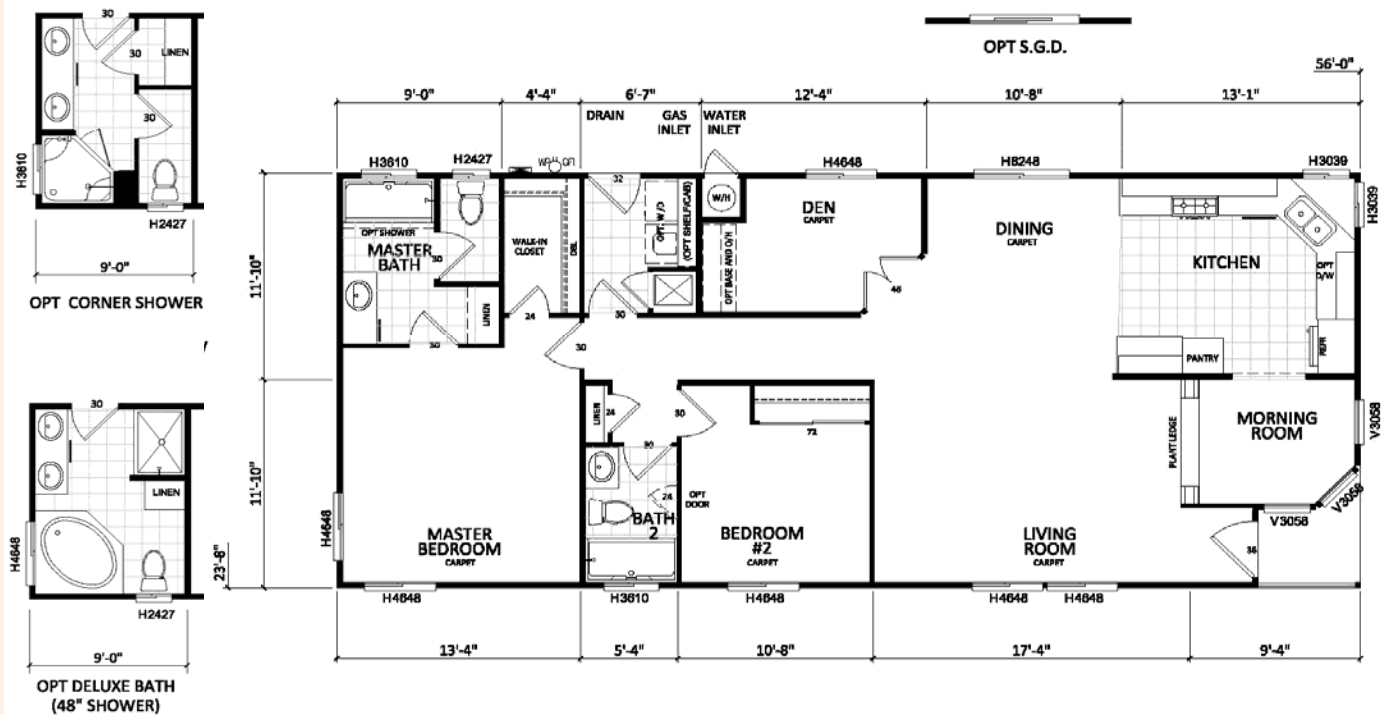
24X52 1228 SQ FT 3 BEDROOMS 2 BATHS

OPT CORNER SHOWER

OPT DELUXE BATH (48" SHOWER)

OPT FRONT ENTRY

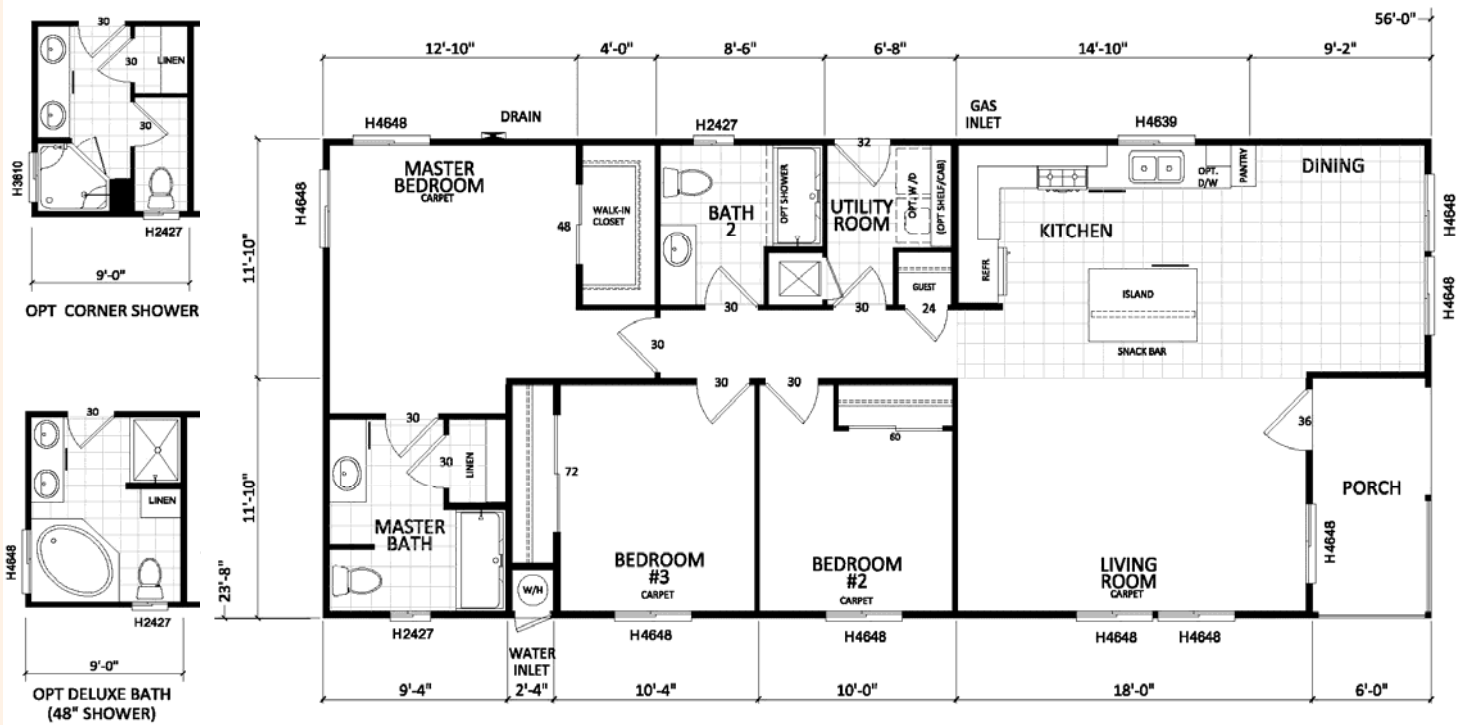
24X56 1325 SQ FT 3 BEDROOMS 2 BATHS



K619-CT

24X56 1325 SQ FT 3 BEDROOMS 2 BATHS

AMBER COVE



K770-CT

28X44 1173 SQ FT 3 BEDROOMS 2 BATHS

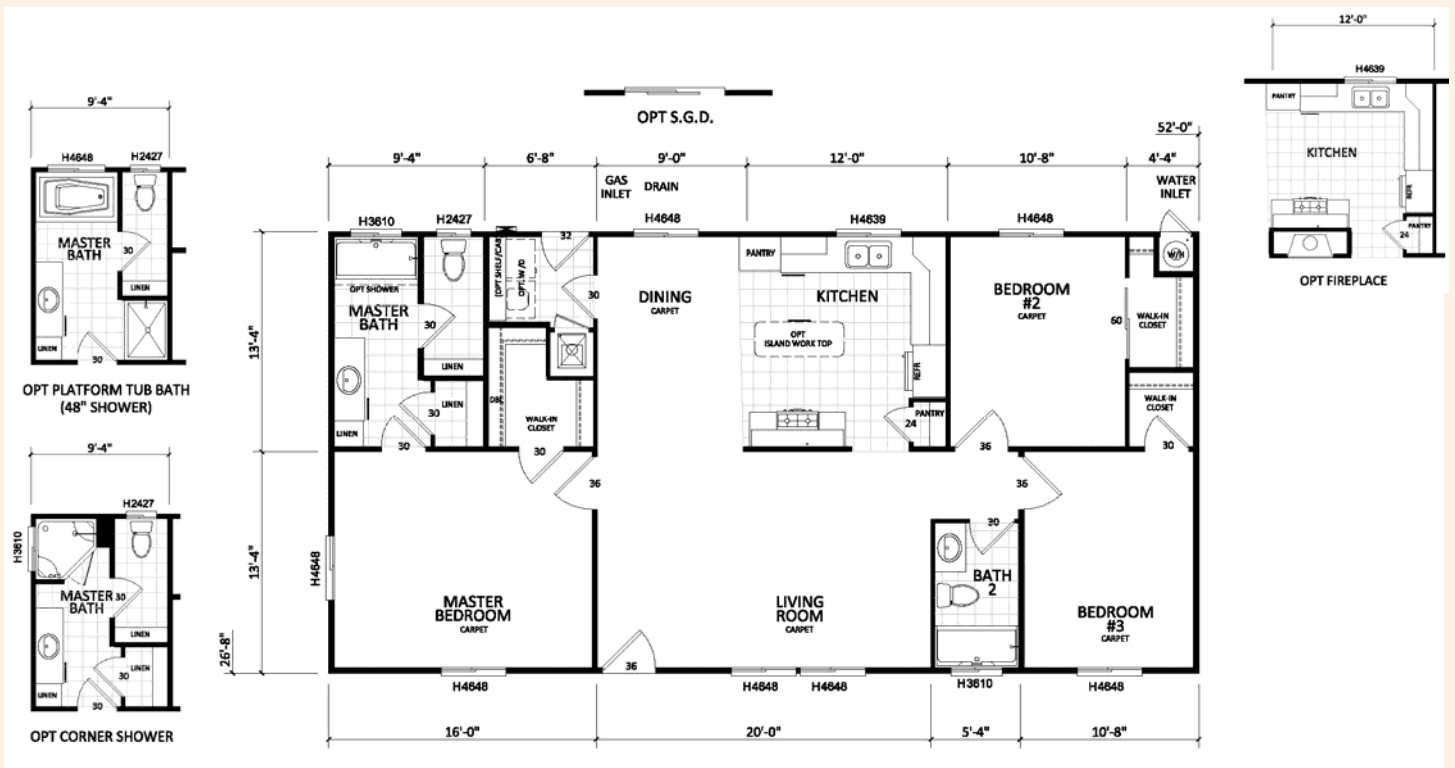


28X48 1280 SQ FT 3 BEDROOMS 2 BATHS

Second Floor Plan Details:

- Overall Dimensions:** 48'-0" wide by 26'-8" deep.
- Rooms and Features:**
 - Master Bedroom:** 13'-4" x 13'-4", includes a walk-in closet (30) and a guest closet (30).
 - Master Bath:** Includes an optional shower or oval tub (30), linen closet (24), and optional door.
 - Utility Room:** Includes optional shelving (32), optional cabinets (30), and optional door.
 - Dining:** 11'-4" x 9'-4", includes optional S.G.D. (Serving Glass Door).
 - Kitchen:** 10'-0" x 5'-4", includes an island, optional dishwasher (30), and optional door.
 - Pantry:** Includes a refrigerator (REF) and optional door.
 - Bath #2:** Includes an optional shower (30) and optional door.
 - Bedroom #2:** 12'-0" x 10'-8", includes carpet.
 - Bedroom #3:** 10'-8" x 10'-8", includes carpet.
 - Living Room:** 20'-0" x 10'-8", includes carpet.
- Optional Features:**
 - OPT CORNER BATH:** Includes optional door (H2427) and optional shower (30).
 - OPT 48" SHOWER:** Includes optional door (H3610) and optional shower (30).
- Dimensions:**
 - Top: 11'-4", 9'-4", 10'-0", 5'-4", 12'-0", 48'-0"
 - Left: 13'-4", 13'-4", 26'-8"
 - Bottom: 13'-4", 4'-0", 20'-0", 10'-8"
 - Right: 48'-0", 10'-8"

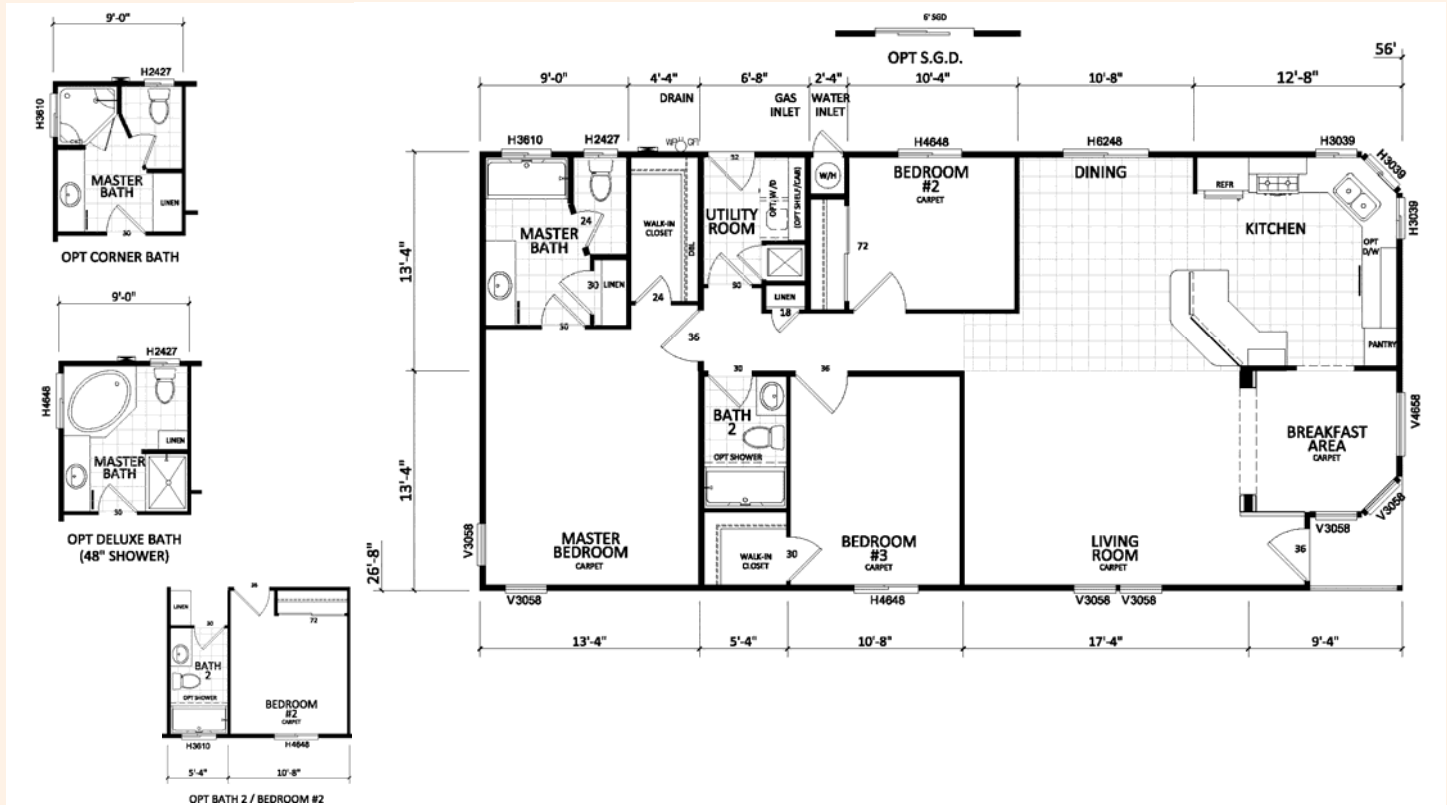
28X52 1387 SQ FT 3 BEDROOMS 2 BATHS



K711-CT

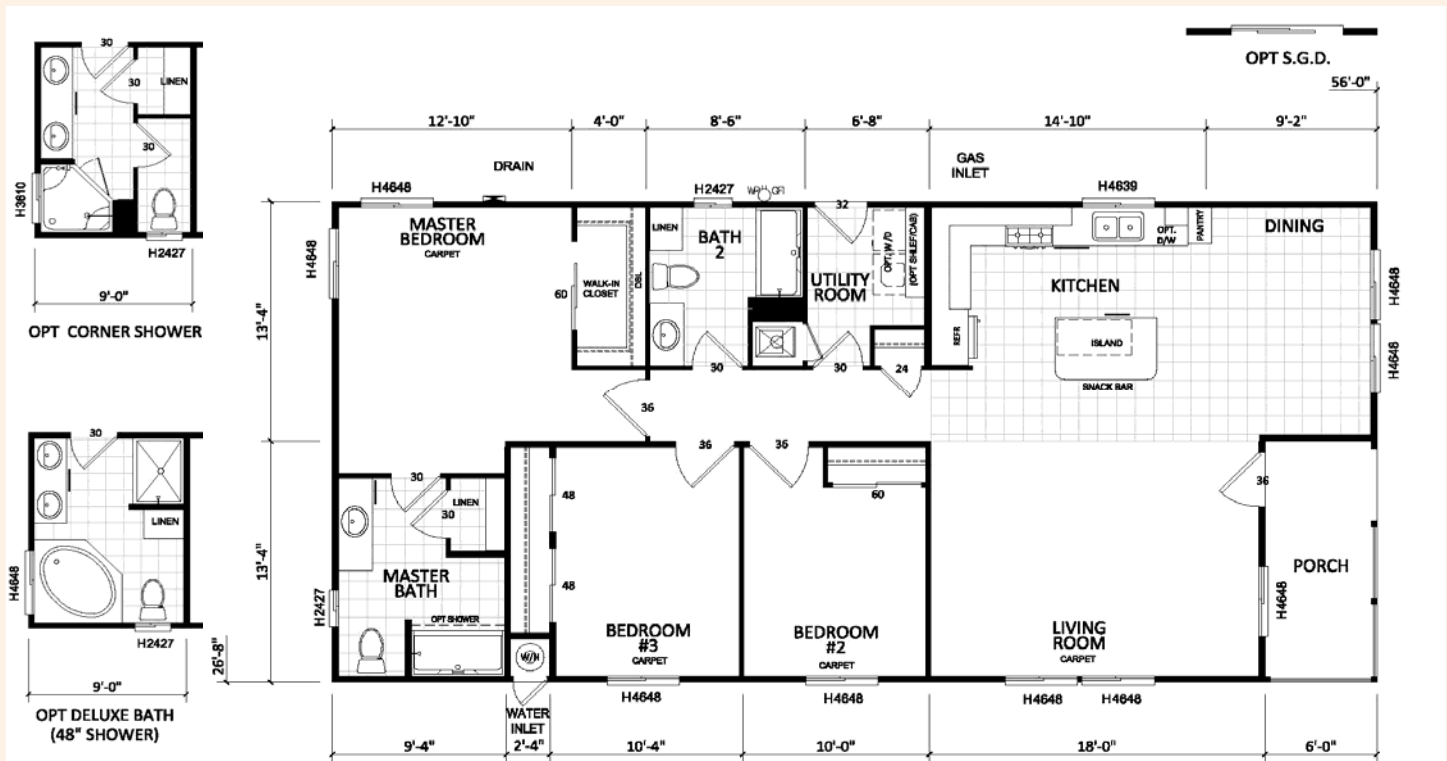
28X56 1491 SQ FT 3 BEDROOMS 2 BATHS

AMBER COVE



K719-CT

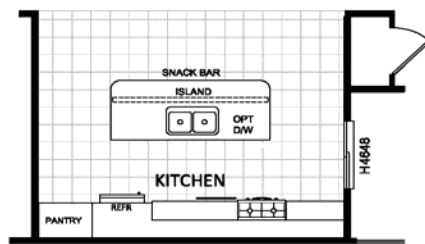
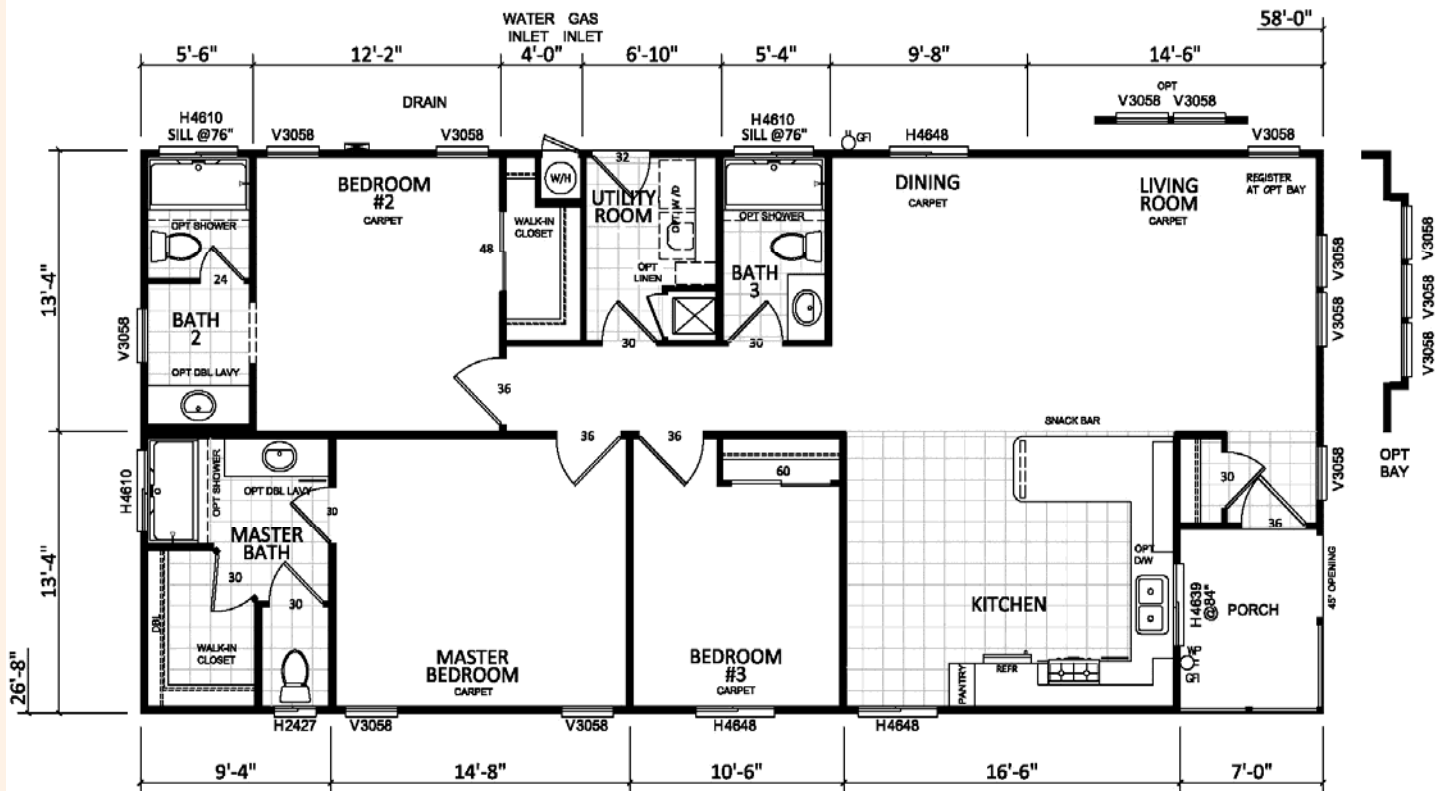
28X56 1493 SQ FT 3 BEDROOMS 2 BATHS



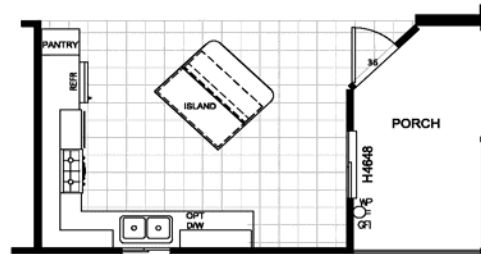
K715-CT

28X58 1547 SQ FT 3 BEDROOMS 3 BATHS

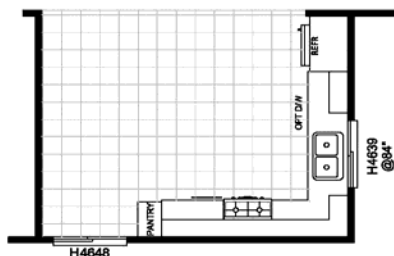
AMBER COVE



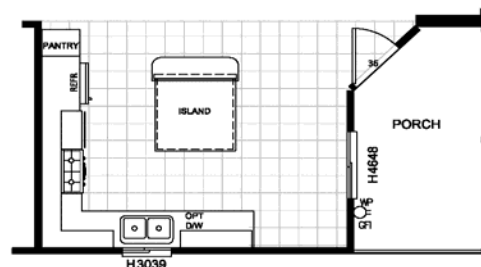
OPTIONAL KITCHEN #1



OPTIONAL KITCHEN #3



OPTIONAL KITCHEN #2



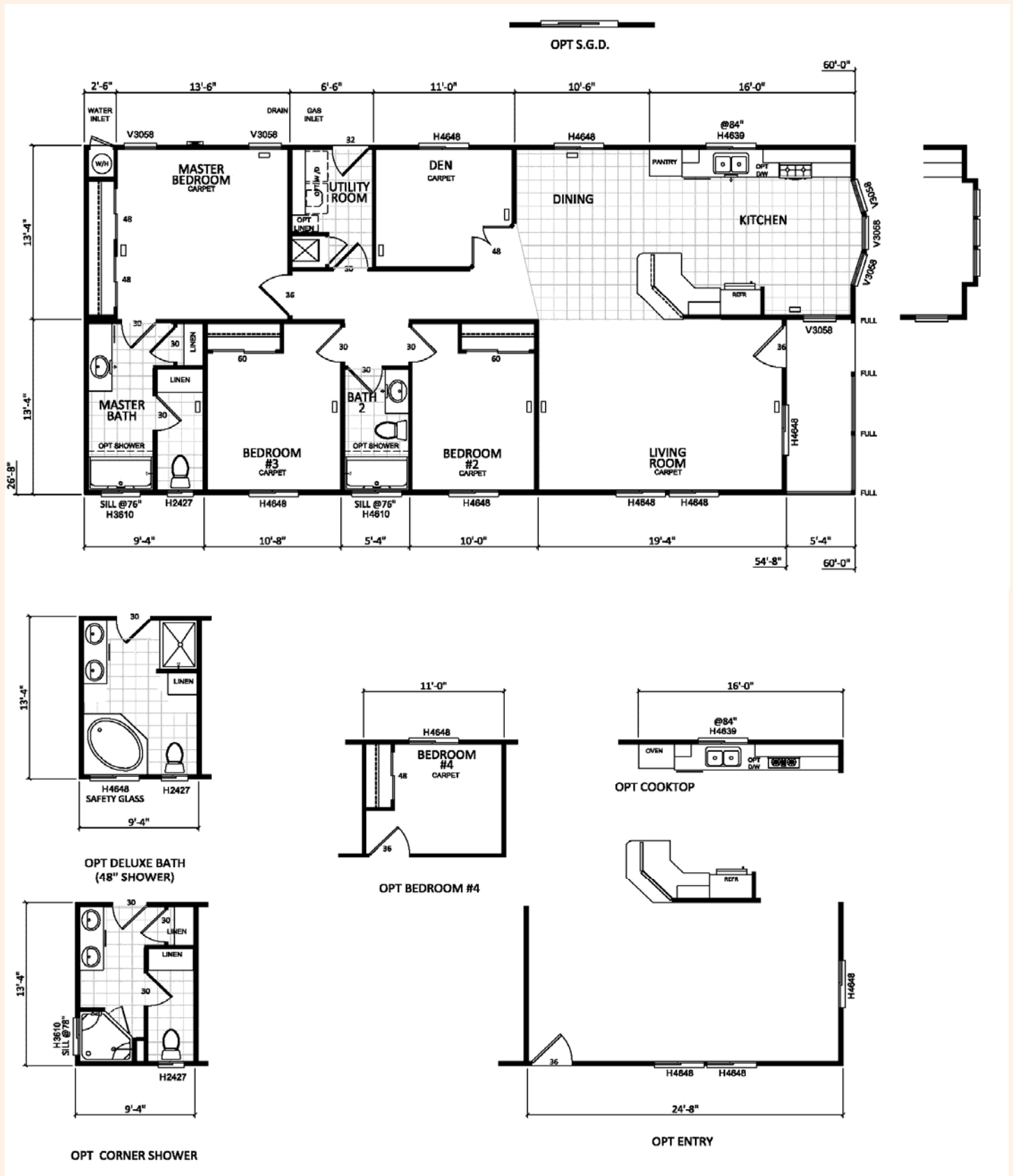
OPTIONAL KITCHEN #4



K734-CT

28X60 1605 SQ FT 3 BEDROOMS/DEN 2 BATHS

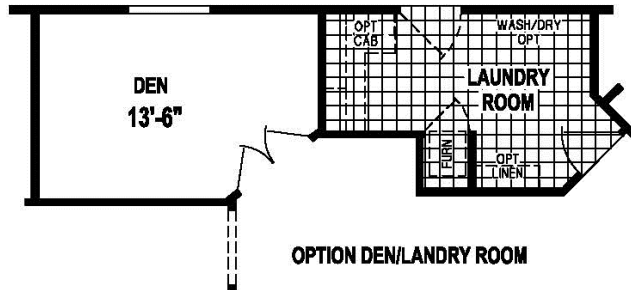
AMBER COVE



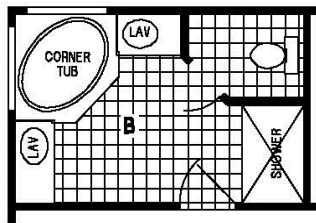
K771-CT

28X64/59 1630 SQ FT 3 BEDROOMS 2 BATHS

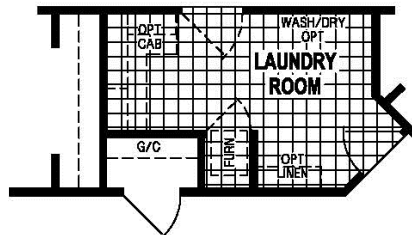
AMBER COVE



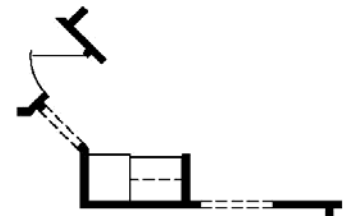
OPTION DEN/LAUNDRY ROOM



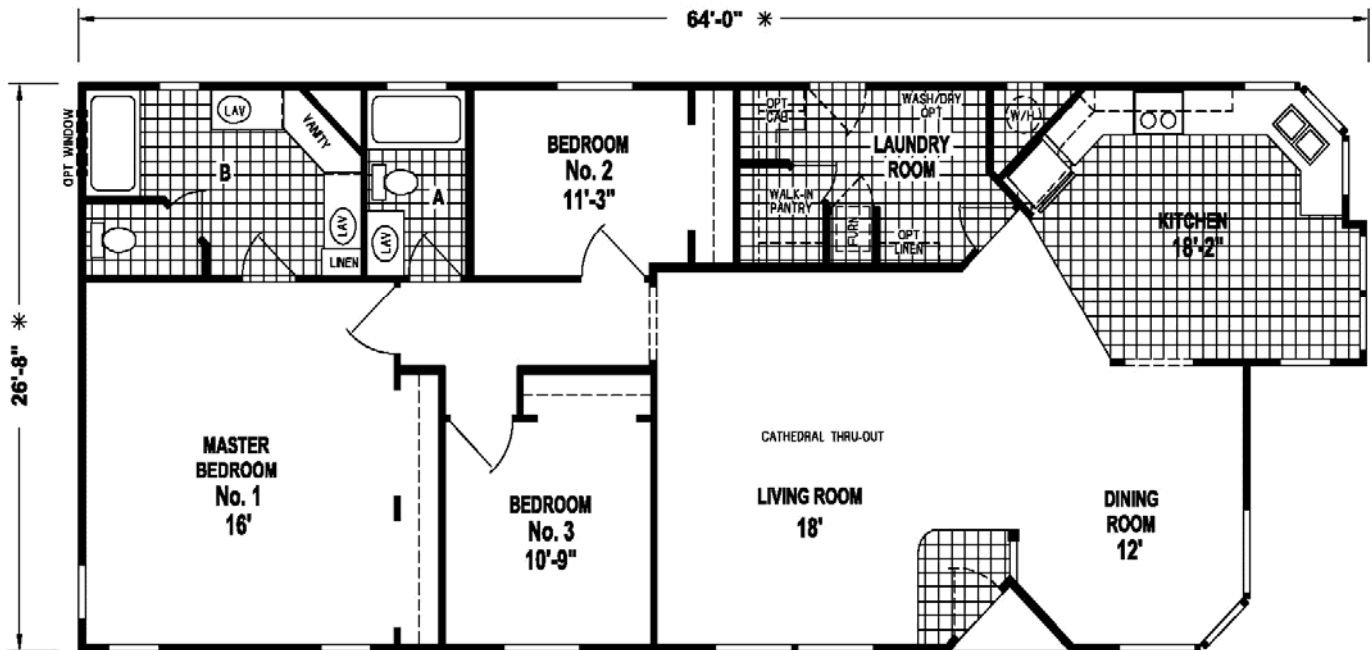
OPTION MASTER BATH



OPTION LAUNDRY ROOM

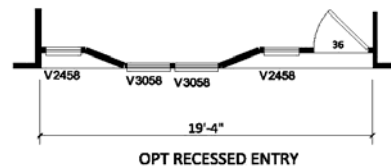


OPTION KITCHEN CABINETS & WALL



28X66 1760 SQ FT 5 BEDROOMS 3 BATHS

Floor plan of the DEN (Carpet). The room is 13'-4" wide. It features a door labeled 'H4848' and 'OPT DBL DOORS'. The room is labeled 'DEN CARPET'. Dimensions 48, 36, and 30 are indicated for specific areas or offsets.

[illegible]

Building your home to **GREEN** standards

- Engineered for efficient use of materials
- 80% of construction waste reused or recycled
- Use of engineered lumber
- Low V.O.C. adhesives and paint
- Formaldehyde-free insulation
- Sealed and tested ducting system
- High efficiency toilets
- Efficient distribution plumbing system
- Mechanical fresh air ventilation system



Proudly helping homeowners conserve energy while helping protect the environment



499 W. Esplanade
San Jacinto, CA 92583
Ph: 800-726-2284

Visit us online at www.skylinehomes.com to learn more about our homes.

Rev 9-2016

For your comfort and safety, Skyline home designs are approved and inspected for conformance to Federal standards.

* Dimensions stated to industry standards. Width and length dimensions are nominal and are not to be used for setup of home on site; consult selling retailers for exact specifications. Overall length does not include approximately four foot hitch. The square footage is approximate and based upon nominal exterior floor size. Room sizes are measured from floor ends and wall centers.

Because of progressive product improvement, all prices & specifications are subject to change without prior notice or obligation to Skyline Corporation.

Your Retailer, an independent contractor, who is not an agent of Skyline Corporation, is the party responsible for your purchase contract and any additions, deletions, alterations, or attachments made to or in your home.