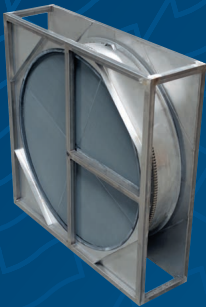
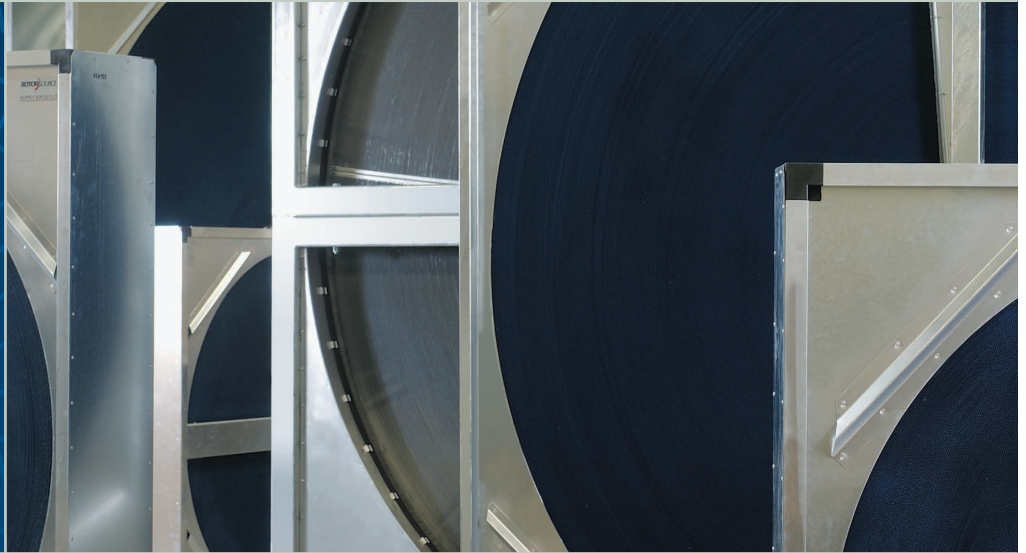


*Your One
Source For
Rotary
Heat, Mass
Transfer &
Evaporative
Cooling
Products*

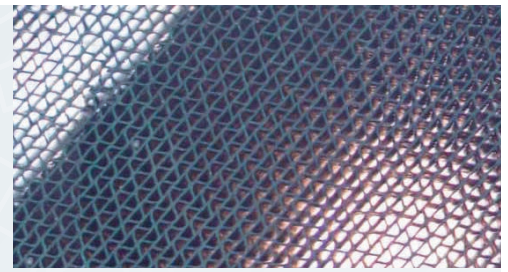


ROTOR **SOURCE**



Rotor Source is a leading supplier of OEM and Contractor installed heat and mass transfer components. We provide **Hygromedia** desiccant dehumidification & **Ostberg** energy recovery rotors and cassettes, as well as **Nature Cool™** Evaporative Cooling Pads. These components are included in HVAC applications from custom engineered environmental control systems to conventional commercial cooling units.

Rotor Source's philosophy is simple: Provide high quality, high capacity products to the marketplace with the shortest lead time possible.



Desiccant Dehumidification, Energy Recovery & Evaporative Cooling Components

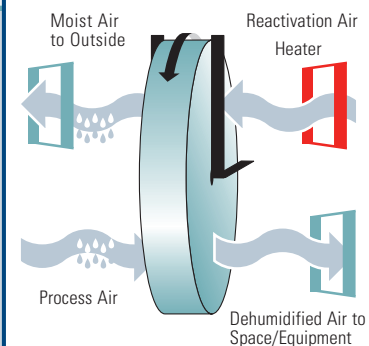
Desiccant Dehumidification

Desiccant Dehumidification Rotors and Cassettes

- › Inorganic media withstands high heat
- › High capacity meets and exceeds the competition
- › Lower pressure drop than the competition
- › No maintenance internal bearings
- › Welded structure maintains tolerance
- › Stainless steel flange compatible with all seals
- › Low cost for industrial & commercial applications
- › 4 week lead time
- › Standard sizes to 3.5 meter diameter – larger diameters available
- › Standard depths include 100mm, 200mm & 400mm
- › Available in non-standard sizes
- › Complimentary Performance Software Program (DSELECT)



Desiccant Dehumidification



Advantages

The Source of High Capacity Dehumidification

- 98% Inorganic Content – Industry's Highest
- 82% Desiccant Loading – Industry's Highest
- 16 LBS/CUFT Optimum Density
- > 200 KPA Mechanical Strength
- Low Pressure Drop
- Water Washable

Rotor Source Hub and Spoke System

The Source of a Rigid Structure

- Thick wall D.O.M. tubing machined hub
- Welded 10 gauge spokes
- Welded coupling nut at spoke end
- Welded media retention strip

Rotor Source Flanged Outer Band

The Source of Accurate Dimension

- Laser cut for maximum accuracy
- Stainless steel construction
- Welded seam w/bolted attachment



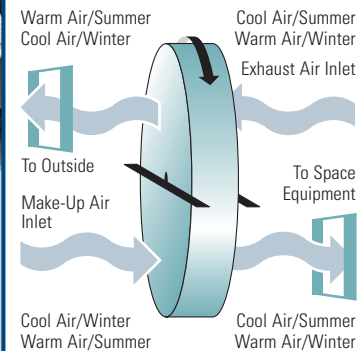
Energy Recovery

Ostberg Energy Recovery Rotors and Cassettes

- › Ostberg, a well know multinational manufacturer of energy recovery equipment, has hundreds of applications and an excellent industry reputation for low price, high quality and minimum required maintenance.
- › TA3 models offer industry standard 3A nonmigrating molecular sieve desiccant performance on a heavy duty aluminum substrate specifically developed for the US market and are AHRI certified.
- › Welded spoke structure maintains tolerance.
- › No maintenance internal bearings
- › Low cost for industrial and commercial applications
- › 4 week lead time
- › Standard sizes to 3.5 meter diameter - larger diameters available
- › Standard depths of 100 and 200 mm
- › Standard flute height of 1.7-1.9 mm offers high capacity and low pressure drop
- › Available in non standard sizes
- › Complimentary performance software program (ESELECT)



Energy Recovery



Advantages

The Source of High Capacity Energy Recovery

- Industry Standard 3A Molecular Sieve offers high capacity and water selective absorption
- All models are AHRI certified.
- Smooth Face ensures close seal tolerance and minimizes leakage

The Source of a Rigid Structure

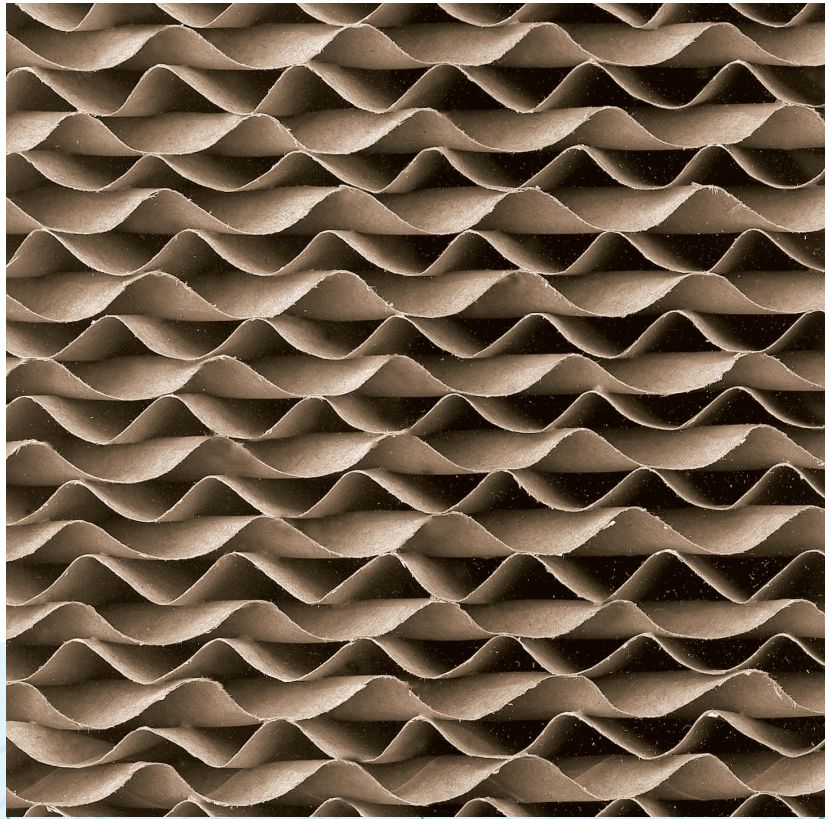
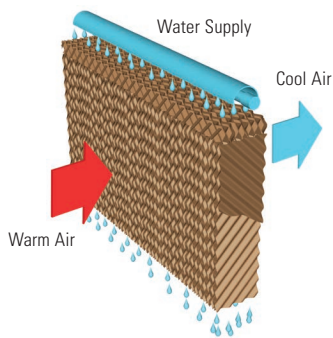
- Oversized shaft and bearings ensure long life and maximum rigidity
- Welded, heavy gauge, interior spokes provide for maximum rigidity at hub and outer band, minimizing operating run out of rotor.
- Heavy gauge cassette and center post resists flex from operating air pressures. Rigid cassette structure ensures low leakage at higher air velocities by maintaining seal clearance

The Source of design and application flexibility

- 16 standard sizes – the right size rotor for a wide spectrum of air volumes
- 16 different cassette configurations from one standard “universal” cassette for maximum design flexibility
- Single and three phase motors for all sizes – the right voltage for the application
- Adjustable purge section on all sizes



Evaporative Cooling



Nature Cool™ Evaporative Cooling Pads

Nature Cool™ offers both Cel and Glas Pad media. Our Cel Pad is manufactured from a special cellulose and our Glas Pad from a unique glass fiber paper which is impregnated and treated to resist biological and mechanical degradation. This provides media longevity and high adsorption rates for optimum system efficiency. The cross fluted design of the Nature Cool™ media results in two important effects. First, it optimizes the amount of surface area available to hold the water which the air flows over. And second, the angles cause the air to change directions in a way that ensures all of the air will touch a wetted media surface before leaving the pad. Therefore, the air leaves the pad with the greatest amount of cooling and/or humidification possible. Nature Cool™ pads also act as a natural filter that purifies the inlet air. The carefully designed flute angle directs water towards both the air inlet and outlet side; the water then intrinsically flushes away dust, algae, and mineral build up on the evaporation surfaces.

The Nature Cool pad is designed to be tough. With proper water bleedoff and regular maintenance, it can be used in imperfect water and air conditions. Exact and consistent humidity control can be obtained through evaporative cooling with Nature Cool Pads.

NATURE COOL™



Evaporative Cooling

Rotor Recores

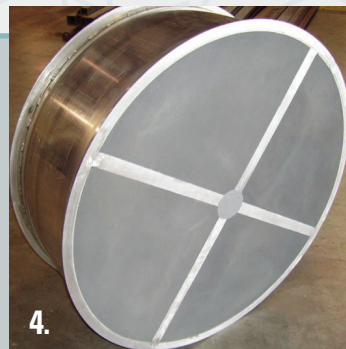
Our rotor recores will improve your desiccant rotor performance.

1. Is your rotor deteriorated?
2. Send us the frame from any desiccant rotor manufacturer.
3. Rotor Source will recore with new, highly durable desiccant dehumidification media, tailored to your application.
4. We will return a product ready to insert back into your desiccant dehumidifier.

Desiccant Media Options

Hygromedia Silica Gel for use in most environments and desiccant cooling applications.

Hygromedia Molecular Sieve for use when the inlet air is hot or dry, alkaline environments, or for low dewpoint applications.



ROTORSOURCE.COM

Contact

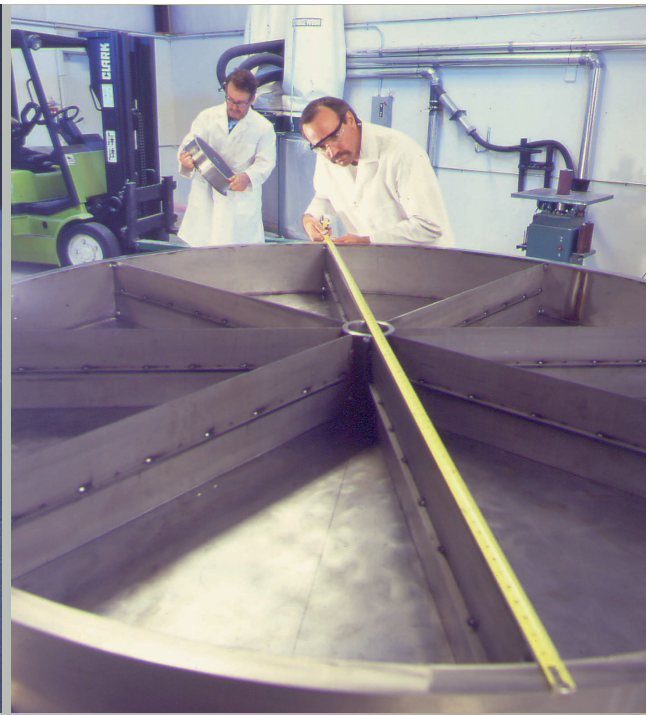
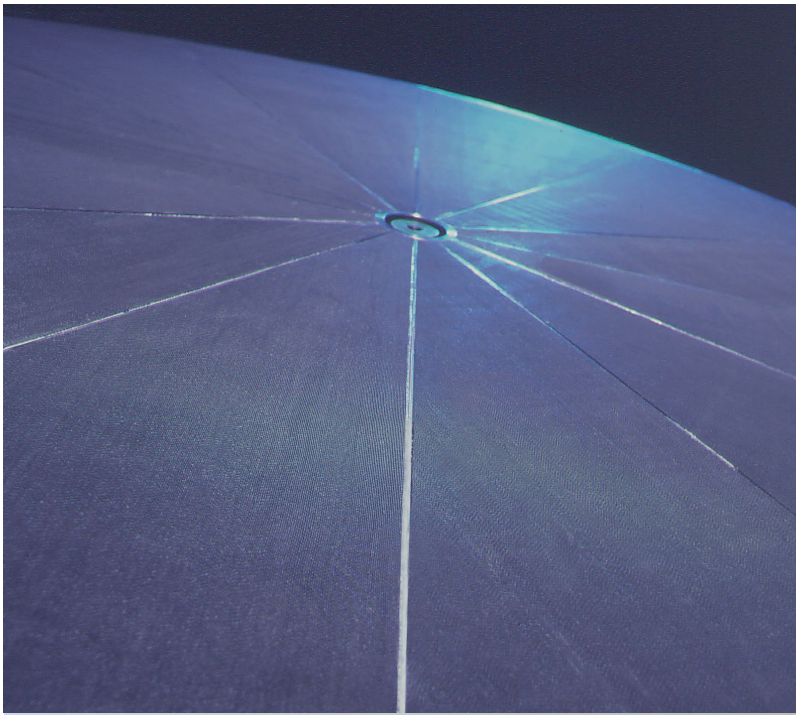
Toll Free: **877-ROTORS1**

Direct: **225-753-1700**

Fax: **225-753-1711**

17444 Opportunity Avenue, Baton Rouge, LA 70817

www.rotorsource.com



Product Range

DESICCANT DEHUMIDIFICATION

ROTOR DIAMETER (MM)	ROTOR DEPTHS (MM)		NOMINAL FLOW (SCFM)	STANDARD WIDTH (IN)		STANDARD HEIGHT (IN)		STANDARD DEPTH (IN)		WEIGHT (LBS)	HP
220	100		75	13.5	13.5	9.5	36	1/400			
320	100	200	150	17	17	9.5	42	1/400			
440	100	200	300	22	22	9.5	48	1/400			
550	100	200	400	1500	27	27	12	143	1/50		
660	100	200	400	2200	30	30	12	188	1/50		
770	100	200	400	3000	36	36	12	234	1/50		
965	100	200	400	4500	43	43	12	319	1/50		
1070	100	200	400	5800	48	48	12.5	397	1/50		
1220	100	200	400	7500	54	54	12.5	520	1/30		
1525	100	200	400	11800	67	67	12.5	806	1/30		
1730	100	200	400	15200	76	76	13.5	1034	1/20		
1940	100	200	400	19000	84	84	13.5	1300	1/20		
2190	200	400		24300	94	94	13.5	1658	1/20		
2438	200	400		30150	106	106	15.5	1989	1/20		
2743	200	400		38100	118	118	15.5	2600	1/20		
2896	200	400		42500	124	124	15.5	2860	1/20		
3050	200	400		47200	130	130	15.5	3218	1/20		
3300	200	400		55200	140	140	15.5	3776	1/20		

ENERGY RECOVERY

ROTOR DIAMETER (IN)	ROTOR DEPTHS (MM)		NOMINAL FLOW (SCFM)	STANDARD WIDTH (IN)		STANDARD HEIGHT (IN)		STANDARD DEPTH (IN)		WEIGHT (LBS)	HP
24	100		1000	28	28	7	94	1/10			
30	100		1500	34	34	7	128	1/10			
36	100		2100	40	40	7	167	1/10			
42	100		2900	46	46	7	213	1/10			
48	100		3800	52	52	7	267	1/10			
54	100		4800	58	58	7	325	1/10			
60	200		8000	64	64	11.42	387	1/2			
66	200		9500	70	70	11.42	454	1/2			
78	200		13500	82	82	11.42	683	1/2			
84	200		15500	88	88	11.42	773	1/2			
90	200		17700	94	94	11.42	868	1/2			
96	200		20100	104	104	16.93	969	1			
108	200		25500	116	116	16.93	1950	1			
120	200		31500	128	128	16.93	2266	1			
126	200		35000	134	134	16.93	2432	1			
138	200		42000	146	146	16.93	2775	1			
156	200		55000	164	164	16.93	3550	1			

Flow, dimensions, weights & HP will vary from the above for >550 diameter at 100 and 400 depth