

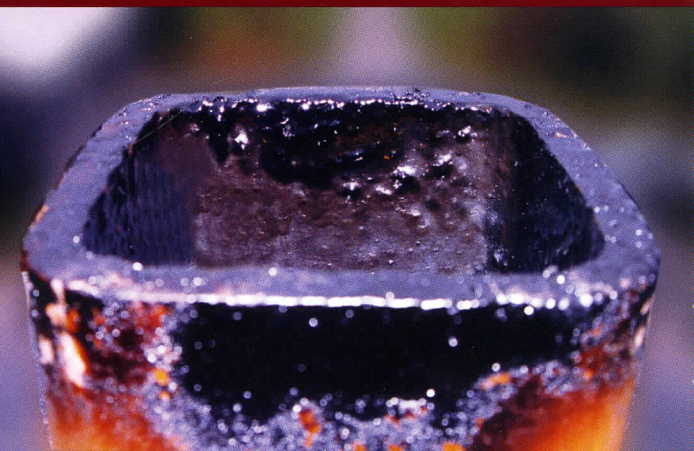


*The Solution For
Glazed Creosote*

Cre-Away™

CREOSOTE MODIFIER

**FOR WOOD BURNING STOVES
AND FIREPLACE CHIMNEYS**



THE PROBLEM.

GLAZED CREOSOTE

Creosote and soot build-up in your fireplace or wood stove chimney can be a fire hazard if your chimney system is not properly cleaned and maintained. Occasionally wood stoves and fireplaces can produce a tar or glaze called third-degree creosote.

Third-degree creosote is nearly impossible to remove by regular chimney sweeping. Many times a chimney professional may be able to determine the cause of this hazardous build-up and recommend solutions to prevent this potentially dangerous form of creosote from reoccurring.

Removing Glazed Creosote

Removing glazed creosote by normal chimney sweeping is nearly impossible; however, there are several methods available to chimney sweeps. One involves the use of caustic chemicals, another, a special rotary cleaning device. Both methods are typically time consuming and expensive. But Cre-Away chemically modifies existing third-degree creosote by changing it to a substance that can be more easily removed by normal chimney sweeping methods.

The time it takes to chemically modify third-degree creosote with Cre-Away will depend on many variables such as: type of wood, moisture content, burning habits, air flow, flue size and amount of existing build-up. In some cases reaction time is fairly fast, within a week or two. Other more difficult build-up problems may require regular use and multiple cleanings during the heating season to completely modify the existing third-degree creosote.

THE SOLUTION.

Cre-AwayTM

CREOSOTE MODIFIER

Cre-Away is a four component powder that safely and effectively modifies glazed or third-degree creosote so that it can be more easily removed by chimney sweeping. First, a reactive agent neutralizes the slightly acidic creosote making it less corrosive to metal components and less flammable. Second, a dehydrator absorbs the oils and moisture contained in some forms of creosote. Third, a combustion inhibitor helps reduce the chance of chimney fires. Finally, a magnesium catalyst helps break down third-degree creosote when the flue is heated by normal use.

By simply squeezing the bottle pointed directly up the flue (with an upward draft) near the top of the firebox, the powder is carried up the chimney coating the entire surface of the flue and enabling the four components to start working.

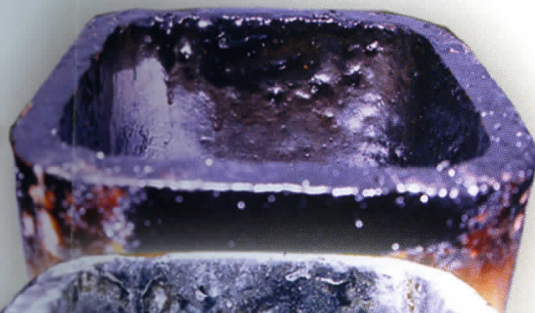
The Net Effect

Cre-Away modifies third-degree creosote by converting it into a more brittle state that has a different expansion/contraction rate than the flue it is attached to.

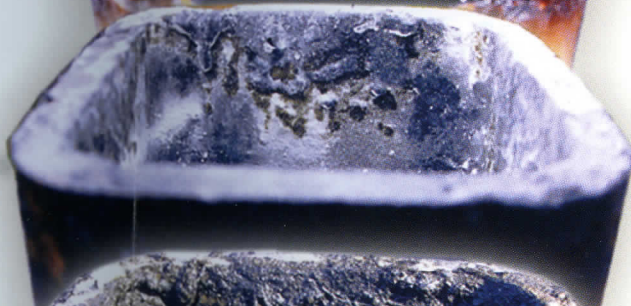
During heating and cooling cycles the treated creosote loses its adhesive properties so it can be more easily removed.

Fast, Effective, & Easy to Use!

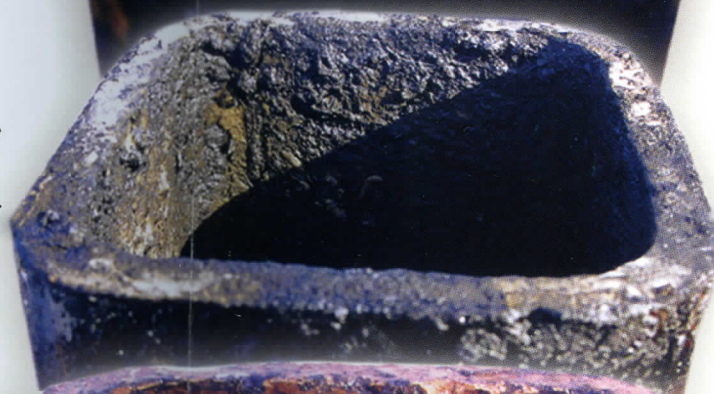
Tough to remove glazed, third-degree creosote on a clay flue liner.



Same liner treated with Cre-Away.



Same liner after glazed creosote has been modified by Cre-Away.



Removal of modified glaze by chimney sweeping.



**ACTUAL BEFORE
AND AFTER PHOTOS**

Cre-Away[™]

- *Effective on All Types of Creosote*
- *Helps Prevent Chimney Fires*
- *Reduces Creosote Odors*
- *Reduces Corrosion in Metal and Masonry Chimneys*
- *Use With All Non-Catalytic Wood Burning Appliances and Fireplaces*
- *Chimneys Clean Easier and More Completely When Swept*

Remember, all chimneys should be inspected and/or cleaned annually by a qualified chimney sweep. The Chimney Safety Institute of America (CSIA), National (NCSG), and State Chimney Sweep Guilds are good sources for finding qualified chimney sweeps.

**Available from professional contractors
throughout North America.**



*Johnston's
Chimney Sweep, Inc.
(724) 872-7339*

SaverSystems[®]

"The leader in chimney protection."

Richmond, IN 47374
www.chimneysaver.com