



A&B EQUIPMENT INC.

EAGLE LINE

2315 U.S. Highway 11 S. Sweetwater, TN. 37874-5059

PHONE: (423) 337-2390

FAX: (423) 337-2338

EMAIL: sales@ab-eagleline.com WEBSITE: www.ab-eagleline.com



BLEC MEDIUM DUTY CLEVIS HITCH BOX



***QUICK HITCH READY**

***ALL WELDED, NO ASSEMBLY REQUIRED**

*** HEAVY 1/4" THICK END PLATES**

*** 3/16" THICK REAR MOLDBOARD, ROLL FORMED FOR ADDED STRENGTH AND IMPROVED SOIL FLOW**

*** SCARIFIER TUBE MORE THAN 3 1/2" SQUARE**

*** SCARIFIER SHANKS HAVE 3 DEPTH SETTINGS, AND REPLACEABLE POINTS**

*** CUTTING EDGES ARE 3/8" X 6" ABRASION RESISTANT STEEL, INTERCHANGEABLE AND REVERSIBLE**

*** WELDED 1/2" X 2 1/2" A-FRAME WITH CAT. 1 "C" TYPE HITCH PINS ON 4 FT. AND 5 FT. BOXES**

*** 15-25 HP RECOMMENDED**

*** WELDED 1/2" X 3" A-FRAME WITH CAT. 1 "C" TYPE HITCH PINS ON 5 1/2 FT. AND 6 FT. BOXES**

*** 25-35 HP RECOMMENDED**

MODEL NO.	WIDTH	SHANKS	WEIGHT
BLEC40	4 FT.	3	280 LB.
BLEC50	5 FT.	4	330 LB.
BLEC55	5 1/2 FT.	4	416 LB.
BLEC60	6 FT.	5	450 LB.
BLEC70	7 FT.	5	525 LB.

BLCW HEAVY DUTY CLEVIS HITCH BOX



***QUICK HITCH READY**

***ALL WELDED, NO ASSEMBLY REQUIRED**

*** 3/8" THICK SIDE PLATES**

*** 3/16" THICK REAR MOLDBOARD, ROLL FORMED FOR ADDED STRENGTH AND IMPROVED SOIL FLOW**

*** SCARIFIER SHANKS HAVE 3 DEPTH SETTINGS AND REPLACEABLE POINTS**

*** CUTTING EDGES ARE 3/8" X 6" ABRASION RESISTANT STEEL, INTERCHANGEABLE AND REVERSIBLE**

***WELDED A-FRAME WITH CAT. 1 / CAT. 2 "C" TYPE HITCH.**

***25 – 60 HP RECOMMENDED**

MODEL NO.	WIDTH	SHANKS	WEIGHT
BLCW55	5 1/2 FT.	6	525 LB.
BLCW60	6 FT.	6	551 LB.
BLCW65	6 1/2 FT.	6	597 LB.
BLCW70	7 FT.	7	638 LB.
BLCW80	8 FT.	8	729 LB.



A&B EQUIPMENT INC.

EAGLE LINE

2315 U.S. Highway 11 S. Sweetwater, TN. 37874-5059

PHONE: (423) 337-2390

FAX: (423) 337-2338

EMAIL: sales@ab-eagleline.com WEBSITE: www.ab-eagleline.com



STANDARD LANDSCAPE BOX



- *ALL WELDED, NO ASSEMBLY REQUIRED
- * 3/8" THICK END PLATE
- * 3/16" THICK FRONT MOLDBOARD ROLL FORMED FOR ADDED STRENGTH AND IMPROVED SOIL FLOW
- *3/16" THICK REAR MOLDBOARD DOUBLE FORMED FOR ADDED STRENGTH
- * HEAVY DUTY 3 POINT "C" TYPE HITCH FOR ADDED STRENGTH
- * CAT. 1 / CAT. 2 COMBINATION HITCH
- * CUTTING EDGES ARE 3/8" X 6" ABRASION RESISTANT STEEL, INTERCHANGEABLE AND REVERSIBLE
- * 5/16" THICK SCARIFIER TUBES
- * SCARIFIER SHANKS ON 11" CENTERS
- * SCARIFIER SHANKS ARE QUENCHED AND TEMPERED WITH 3 DEPTH SETTINGS
- * 35-70 HP RECOMMENDED

MODEL NO.	WIDTH	SHANKS	WEIGHT
BLS60	6 FT.	7	770 LB.
BLS65	6 1/2 FT.	7	810 LB.
BLS70	7 FT.	8	850 LB.
BLS80	8 FT.	9	962 LB.

FLOATING REAR MOLDBOARD LANDSCAPE BOX



- *ALL WELDED, NO ASSEMBLY REQUIRED
- * 3/8" THICK END PLATE
- * 3/16" THICK FRONT MOLDBOARD ROLL FORMED FOR ADDED STRENGTH AND IMPROVED SOIL FLOW
- *3/16" THICK REAR MOLDBOARD DOUBLE FORMED FOR ADDED STRENGTH
- *FLOATING OR LOCKED REAR MOLDBOARD
- * HEAVY DUTY A-FRAME AND "C" TYPE HITCH FOR ADDED STRENGTH
- * CAT. 1 / CAT. 2 COMBINATION HITCH
- * CUTTING EDGES ARE 3/8" X 6" ABRASION RESISTANT STEEL, INTERCHANGEABLE AND REVERSIBLE
- * 5/16" THICK SCARIFIER TUBES
- *SCARIFIER SHANKS ON 11" CENTERS
- * SCARIFIER SHANKS ARE QUENCHED AND TEMPERED WITH 3 DEPTH SETTINGS
- * 35-70 HP RECOMMENDED

MODEL NO.	WIDTH	SHANKS	WEIGHT
KBF60	6 FT.	7	881 LB.
KBF65	6 1/2 FT.	7	926 LB.
KBF70	7 FT.	8	973 LB.
KBF80	8 FT.	9	1061 LB.



A&B EQUIPMENT INC.

EAGLE LINE

2315 U.S. Highway 11 S. Sweetwater, TN. 37874-5059

PHONE: (423) 337-2390

FAX: (423) 337-2338

EMAIL: sales@ab-eagleline.com WEBSITE: www.ab-eagleline.com



HEAVY DUTY FLOATING REAR MOLDBOARD BOX



- *QUICK HITCH READY
- *ALL WELDED, NO ASSEMBLY REQUIRED
- *1/2" THICK END PLATES
- *1/4" THICK FRONT MOLDBOARD ROLL FORMED FOR ADDED STRENGTH AND IMPROVED SOIL FLOW
- *1/4" THICK REAR MOLDBOARD DOUBLE FORMED FOR ADDED STRENGTH
- *FLOATING OR LOCKED REAR MOLDBOARD
- *HEAVY DUTY 3 POINT "C" TYPE HITCH FOR ADDED STRENGTH WITH REPLACEABLE CAT. 1 / CAT. 2 PINS
- * CUTTING EDGES ARE 3/8" X 6" ABRASION RESISTANT STEEL, INTERCHANGEABLE AND REVERSIBLE
- *1/2" THICK SCARIFIER TUBES
- *SCARIFIER SHANKS ON 11" CENTERS
- *SCARIFIER SHANKS ARE QUENCHED AND TEMPERED WITH 3 DEPTH SETTINGS
- *50 - 70 HP RECOMMENDED

MODEL NO.	WIDTH	SHANKS	WEIGHT
KBSF60	6 FT.	7	940 LB.
KBSF65	6 1/2 FT.	7	983 LB.
KBSF70	7 FT.	8	1043 LB.
KBSF80	8 FT.	9	1143 LB.

ROLLOVER LANDSCAPE BOX: 3 POSITIONS



- *ALL WELDED, INSTALL HANDLE AND READY TO USE.
- *HAS 3 POSITIONS FROM TRACTOR SEAT
- *3/8" THICK END PLATES
- *1/2" THICK MAIN TUBE
- *3/16" THICK MOLDBOARD ROLL FORMED FOR ADDED STRENGTH AND IMPROVED SOIL FLOW
- *3/4" PIVOT BOLTS KEEP MAIN FRAME ARMS FROM SPREADING
- *HEAVY DUTY 3 POINT "C" TYPE HITCH FOR ADDED STRENGTH WITH REPLACEABLE CAT. 1 PINS
- *CUTTING EDGES ARE 3/8" X 6" ABRASION RESISTANT STEEL, INTERCHANGEABLE AND REVERSIBLE
- *5/16" THICK SCARIFIER TUBE WITH SHANKS ON 11" CENTERS
- *SCARIFIER SHANKS HAVE 2 DEPTH SETTINGS
- *35 - 50 HP RECOMMENDED

MODEL NO.	WIDTH	SHANKS	WEIGHT
BLR55	5 1/2 FT.	6	750 LB.
BLR60	6 FT.	7	800 LB.
BLR65	6 1/2 FT.	7	850 LB.
BLR70	7 FT.	8	910 LB.



A&B EQUIPMENT INC.

EAGLE LINE

2315 U.S. Highway 11 S. Sweetwater, TN. 37874-5059

PHONE: (423) 337-2390

FAX: (423) 337-2338

EMAIL: sales@ab-eagleline.com WEBSITE: www.ab-eagleline.com



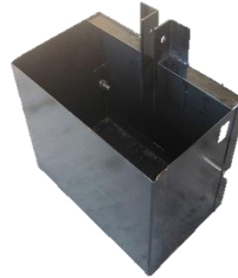
CORRAL SCRAPER BOX



- *QUICK HITCH READY
- *ALL WELDED, NO ASSEMBLY REQUIRED
- *LARGE CAPACITY
- *3/8" THICK SIDE PLATES
- *24" HIGH REAR MOLDBOARD – DOUBLE FORMED
- *1/4" THICK HITCH TUBE
- *HEAVY DUTY 3 POINT "C" TYPE HITCH FOR ADDED STRENGTH, REPLACEABLE CAT. 1 - 2 PINS
- *CUTTING EDGES ARE 3/8" X 6" ABRASION RESISTANT STEEL, INTERCHANGEABLE AND REVERSIBLE
- *WELDED WEAR STRIP ON EACH SIDE
- *7 FT. HAS 42 CUBIC FEET STRUCK CAPACITY
- *8 FT. HAS 48 CUBIC FEET STRUCK CAPACITY
- *50 – 70 HP RECOMMENDED
- *OPTIONAL: REPLACEABLE SKIDS
- *OPTIONAL: RUBBER CUTTING EDGE

MODEL NO.	WIDTH	WEIGHT
BCS60	6 FT.	660 LB.
BCS70	7 FT.	700 LB.
BCS80	8 FT.	740 LB.

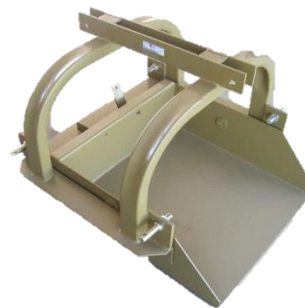
WEIGHT BOX



- *QUICK HITCH READY
- *ALL WELDED CONSTRUCTION
- *ATTACH PINS AND READY TO USE

MODEL NO.	WEIGHT
BWO10	103 LB.

SCOOP: REAR



- *5 CUBIC FOOT CAPACITY
- *ASSEMBLED COMPLETE
- *3 POINT HITCH WITH 4 REPLACEABLE CAT. 1 LIFT ARM PINS
- *SCOOP IS 3/16" THICK STEEL PLATE AND TUBE FRAME WITH ANGLE BASE
- *REVERSIBLE – REVERSE WORKS AS A SHOVEL
- *ROPE CONTROLLED DUMPING AND AUTOMATIC RELATCHING FROM TRACTOR SEAT

MODEL NO.	WEIGHT	HP RECOMMENDED
RSO50	216 LB.	15 - 25



A&B EQUIPMENT INC.

EAGLE LINE

2315 U.S. Highway 11 S. Sweetwater, TN. 37874-5059

PHONE: (423) 337-2390 FAX: (423) 337-2338

EMAIL: sales@ab-eagleline.com WEBSITE: www.ab-eagleline.com

