

GRADUATED COMPRESSION LEGWEAR

BSN medical offers a broad range of graduated compression legwear to meet your patients' needs – whether it's **JOBST®**, the #1 physician recommended brand, or **Activa®**, graduated legwear ideal for self-selection and the cost-conscious consumer.

Graduated Compression Legwear can help prevent the occurrence of and guard against further progression of venous disorders. Compression legwear exerts a specific pressure around your ankles to reduce the diameter of distended veins. This reduction causes an increase in venous blood flow and valve effectiveness. As a result, pain and swelling are reduced.

CONDITIONS OF THE LEG

Tired, Aching Legs – occurs when the blood flow slows in the legs and can be an indicator of **Deep-Vein Thrombosis**.

Mild Ankle/Foot Swelling – when blood and/or tissue fluid pool in the legs and feet due to poor circulation.

Varicose Veins/Spider Veins (mild varicosities) – vessels that have progressed to a secondary condition of chronic venous insufficiency due to vein wall weakness or a malfunctioning valve, causing the return blood flow to become slower and more turbulent. Some varicose veins may need to be treated surgically.

Deep-Vein Thrombosis – occurs when blood flow decreases (especially in the lower extremities), causing blood to pool in the legs leading to blood clot (thrombus) formation. An **Embolism** occurs when the thrombus dislodges and travels throughout the body, potentially causing a more serious condition such as pulmonary thrombosis (blocked artery in the lungs). **Thrombo-Embolic Disease** (blood clot formation) can occur from vascular injury, hemostasis (pooling of blood), or change in blood chemistry.

Lymphedema – when a body part swells due to an abnormal accumulation of lymph fluid, occurring when there is interference with the normal drainage of lymph fluid back into the blood. It is commonly seen as swelling the arm, leg, neck, or abdomen.

Phlebitis – inflammation and clotting in a vein, most often a leg vein, due to infection, inflammation, or trauma. People with varicose veins are more often affected. Inflammation occurs suddenly, causing the thrombus to adhere firmly to the vein wall, which can clog a superficial vein.

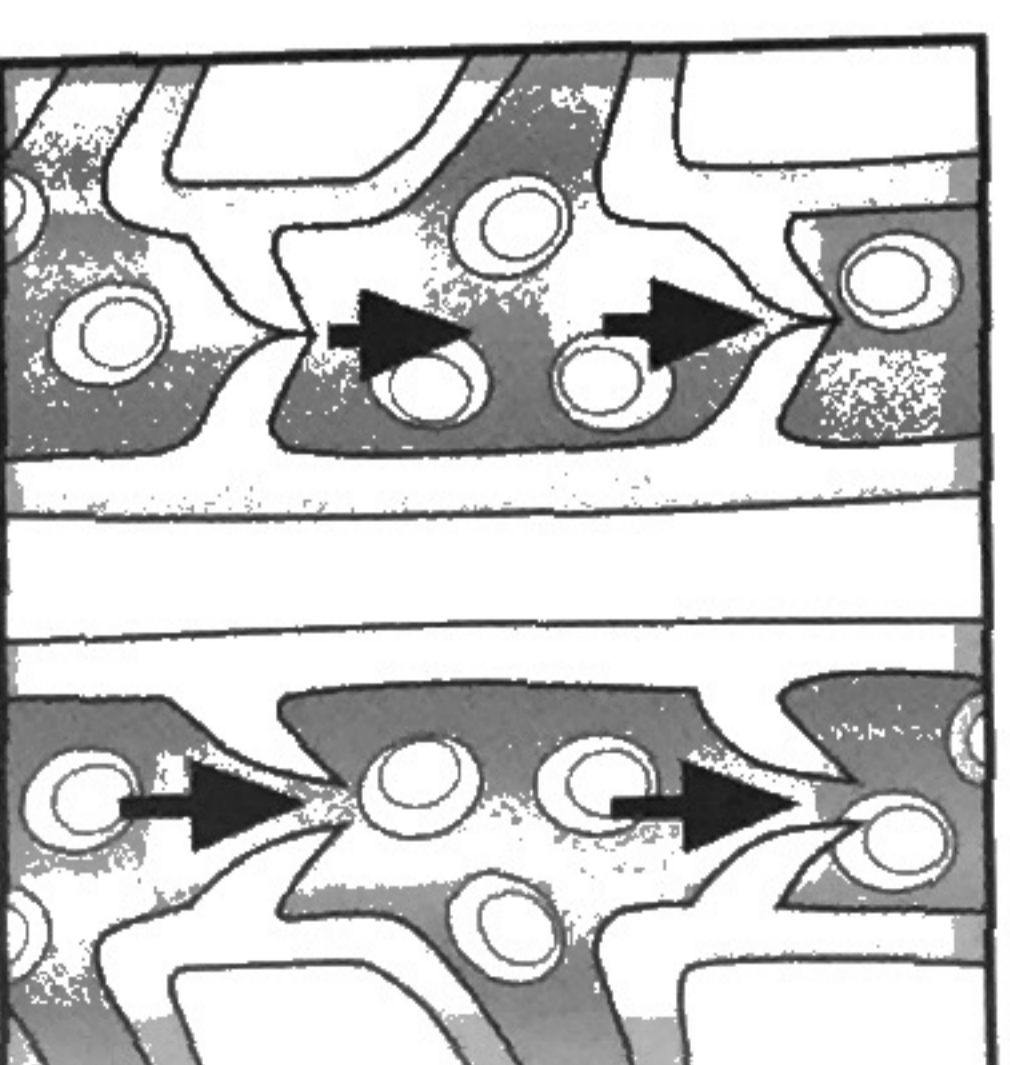
Economy Class Syndrome (ECS) – refers to Deep-Vein Thrombosis (see above) when linked with air travel, especially during long flights when a traveler may experience inactivity and cramped seating.

#1 physician recommended

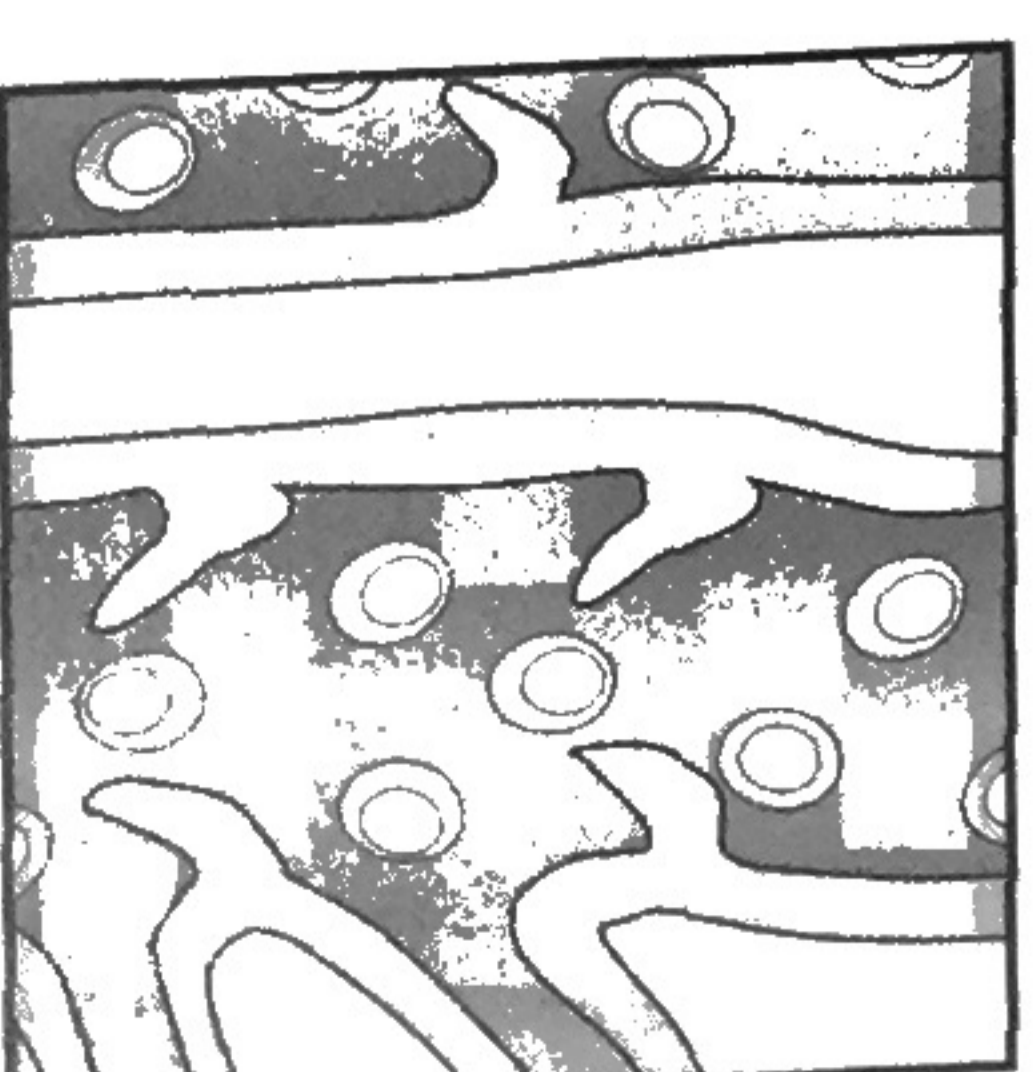
JOBST®

Activa®

LEG VEINS



Normal
functioning valves
return blood-flow



Abnormal functioning
valves, leading to
venous disorders