

Fletcher Place Community Center Inc.



Location:
1637 Prospect St.
Indianapolis, IN 46203

Mailing Address:
P.O. Box 825
Indianapolis, IN 46206

(317) 636-3466 • www.fletcherplacecc.org

 **Like us on Facebook!**

Rev. Jessi Langlie
Executive Director

(317) 636-3466 x6
jessi@fletcherplacecc.org



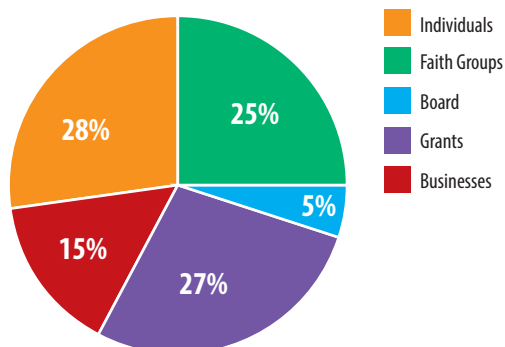
Mission Statement

To ease the suffering of persons homeless or living in our southeast side service area through the compassion of Jesus Christ as shown by volunteers, donors and staff.

Geographic Service Area

Fletcher Place serves the community on the south side of Indianapolis. The Care Area encompasses the area from English Ave. to Raymond St. and from Shelby St. to Sherman Dr.

2015 Funding Sources



Total Employees: **13**
2016 Budget: **\$397,386**
Year Established: **1872**

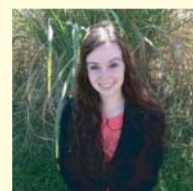
EVENTS/FUNDRAISING

The 7th annual **Culinary Collage** will be held on Sunday, May 1st at the Biltwell Event Center in Indianapolis. This event is family friendly featuring food samples from locally owned restaurants, a silent auction, live auction, raffle and a Silly Safari animal show complete the day. In the past, 100% of funds raised have gone directly to our programs!



Fridays @ Fletcher is an opportunity for anyone who wants to know more about Fletcher Place Community Center. We start with a tour of the center followed by a wonderful breakfast and time for Q & A. Contact Charity to reserve your spot!

Save the Date! On November 15th, the Board of Directors will host our annual **Appreciation Dinner**. Let us know today if you want to be on the invite list!



Charity Shultz
Assistant Director
(317) 636-3466 x4
charity@fletcherplacecc.org

OPPORTUNITIES

Volunteer

Opportunities range from serving a meal, sorting donations for the free thrift store, stocking food in the food pantry, helping out in the Art in the City program, Preschool, Seeds of Hope Community Garden Project, or building upkeep. Or get in the holiday spirit by helping out with our annual Christmas Toy Store!

Last year our generous volunteers put in 12,452 hours at the center! Further information and dates are available on our website - get started today!

Contact: charity@fletcherplacecc.org
(317) 636-3466 x4

BOARD

Ed Martin - President
Avon UMC

Randy Sorrell - Vice President
Surroundings by Nature Works

Jillian Venci Fuhs - Treasurer

Katie Colden - Secretary

Give

- ✓ Donate on our website:
www.fletcherplacecc.org
- ✓ Consider Fletcher Place in your Estate Plans
- ✓ Join our Fletcher Place 500 Club
"Keeping the Doors Open"

Donate online or call Charity at
(317) 636-3466 x4.

In-Kind Needs

- Gently used clothing
- Canned goods
- School supplies (for Preschool)
- New toys and clothing for our Christmas shopping program in December

Jim Caughey

Don Cochran

John Cusson

Robin Heldman

Kathy McDonald

Lara Noren

David V W Owen

Ann Sumner

Bonnie Uber

Our Board is composed of volunteers who serve 3 year terms.